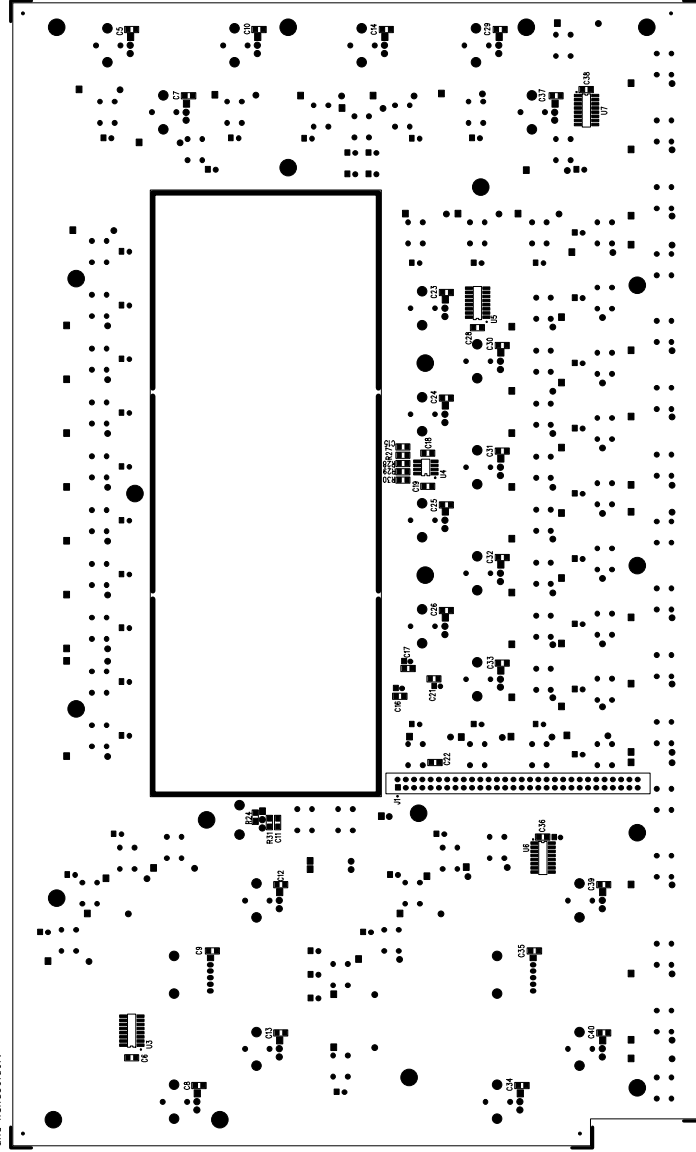
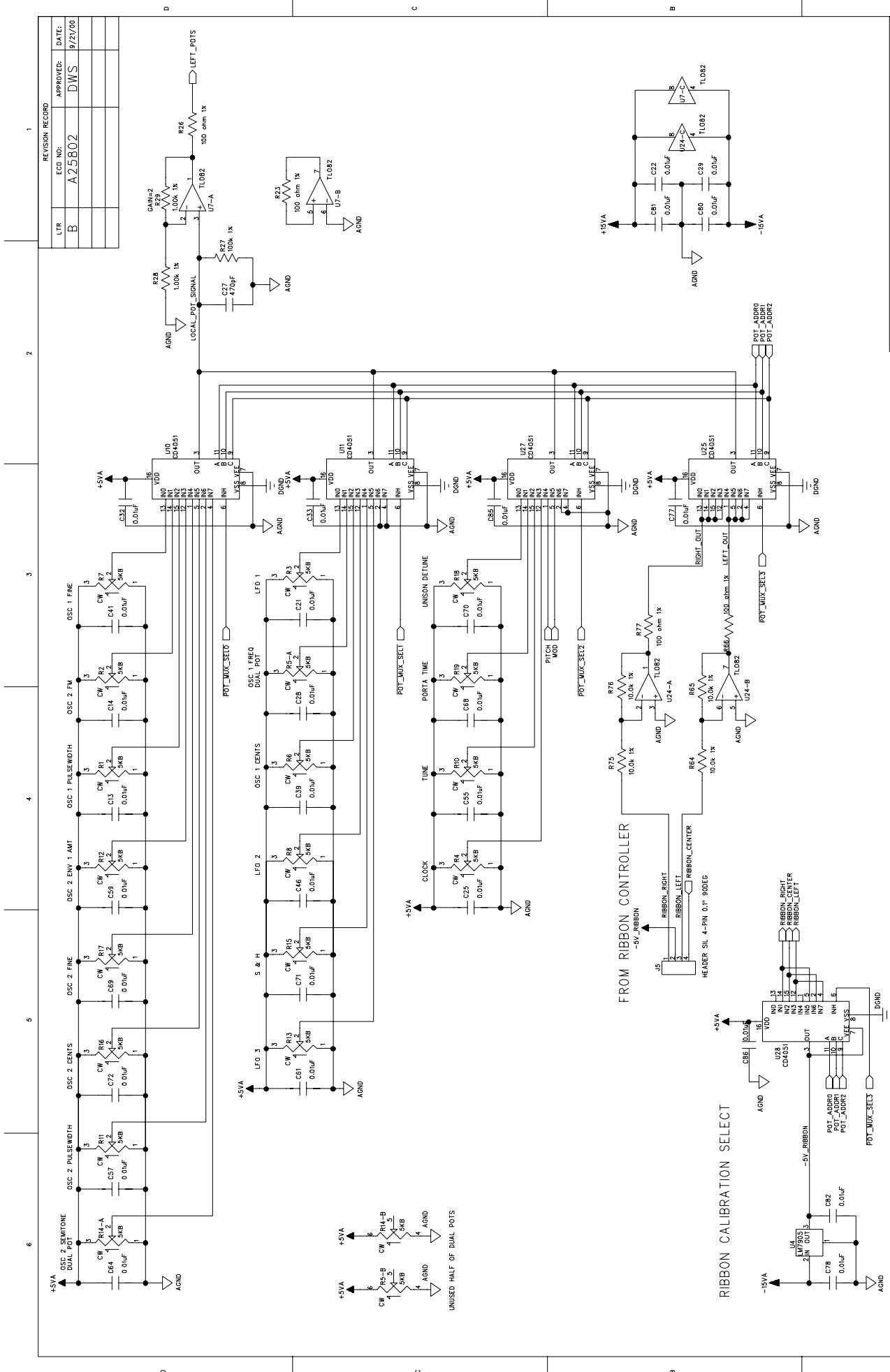




ALESIS ASSEMBLY DRAWING "BOTTOM" 9-79-0207-C

3. Insert J1 (60-pin DIL header) on bottom side and hand-solder.





REVISION RECORD		APPROVED:	DATE:
LTR	ECD NO:	DWS	9/21/00
B	A25802		

ESTIMATED POWER FROM +7V SUPPLY 312MA FROM +5V SUPPLY 12MA FROM -5V SUPPLY	
DRNAME:	BRIAN SHM
DATED:	7/27/00
RELEASED:	DWS
DATED:	9/21/00

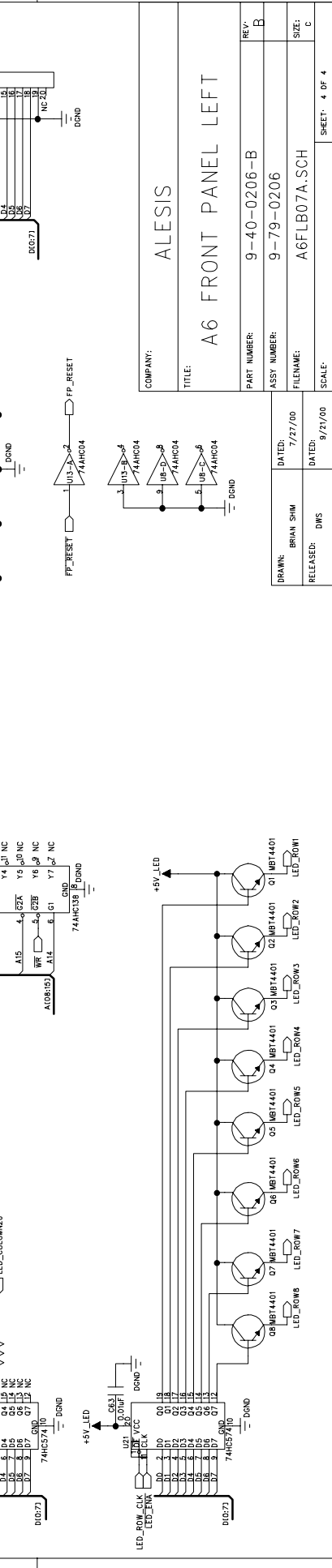
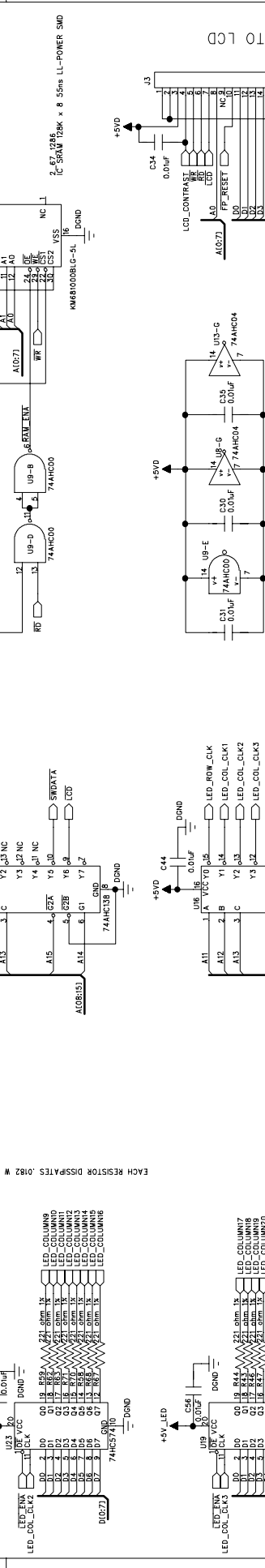
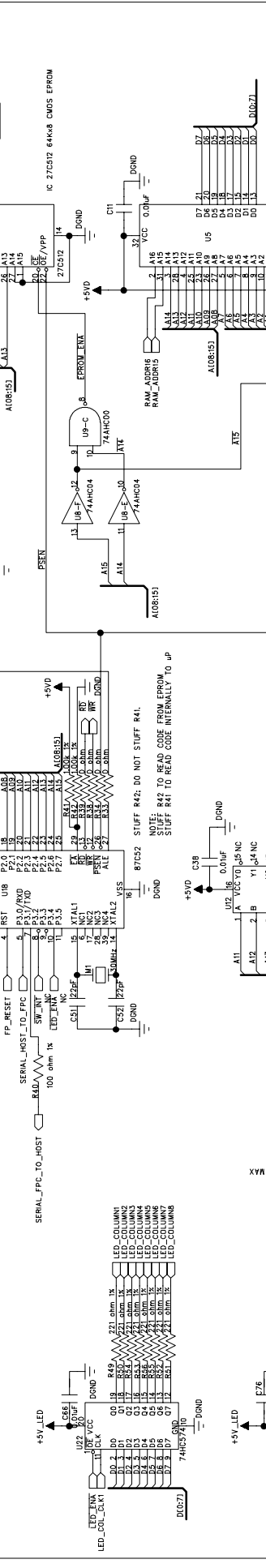
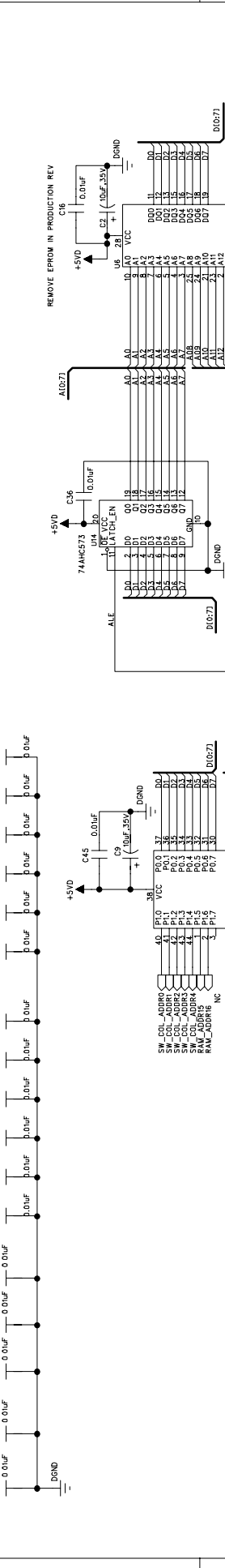
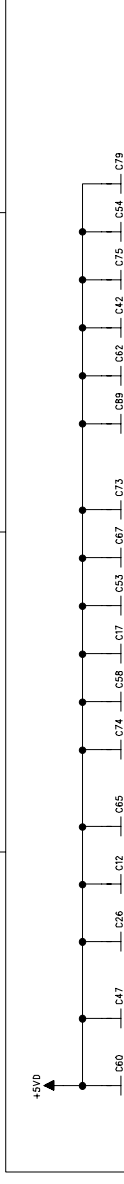
COMPANY:		ALESIS	
TITLE:		A6 FRONT PANEL LEFT	
PART NUMBER:	9-40-0206-B	REV:	B
ASSY NUMBER:	9-79-0206	SIZE:	C
FILENAME:	A6FLB07D.SCH	SHEET:	1 OF 4





REVISION RECORD		
LTR	ECO NO:	APPROVED: DATE:
B	A25802	DWS 9/21/00

REV.	DATE	DESCRIPTION
A	9/21/00	REMOVE EPROM IN PRODUCTION REV

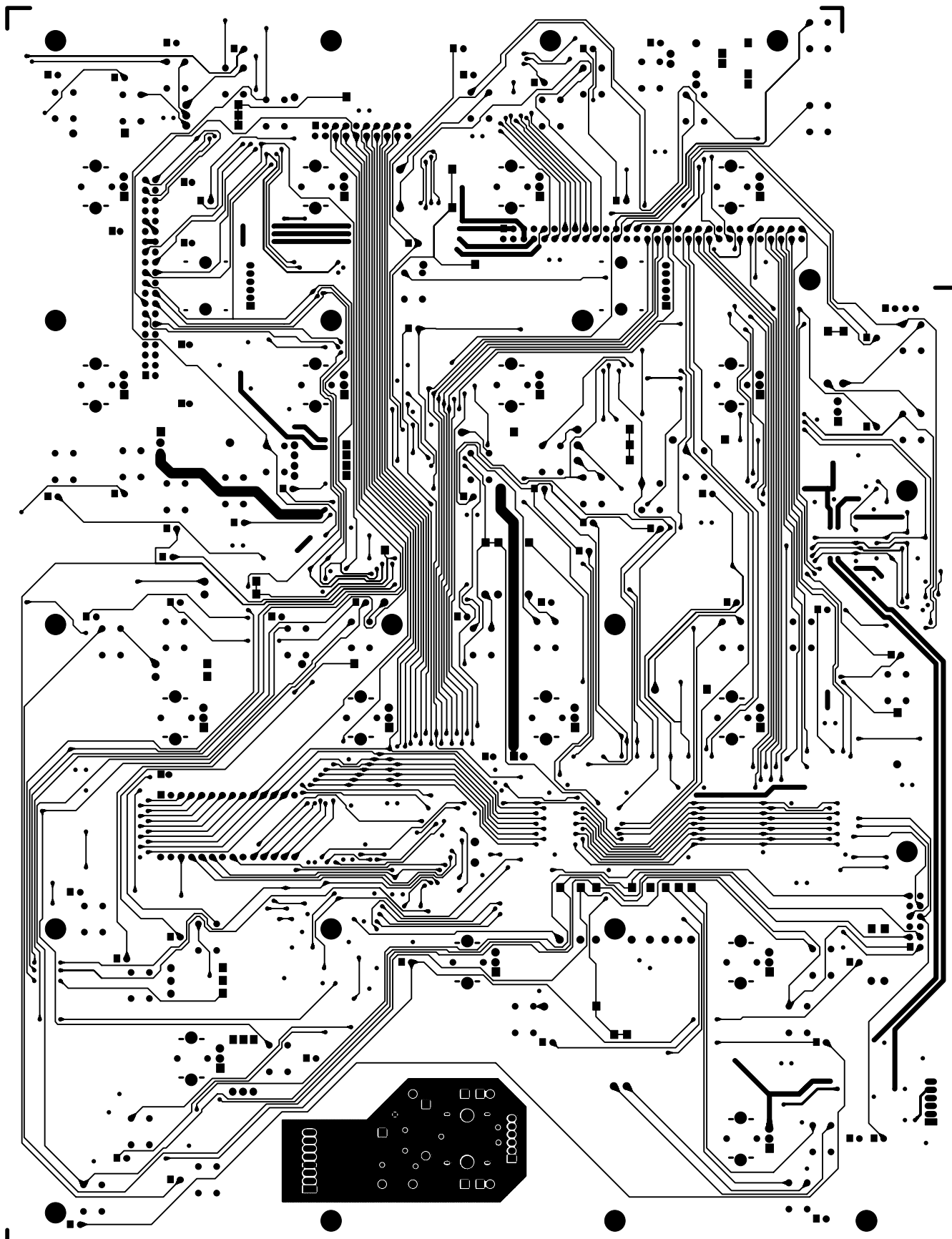


COMPANY:	ALESIS
TITLE:	A6 FRONT PANEL LEFT
PART NUMBER:	9-40-0206-B
ASSY NUMBER:	9-79-0206
FILENAME:	A6FLB07A.SCH
SCALE:	

DRAWN:	BRIAN SHIM	DATE:	7/27/00
RELEASED:	DWS	DATE:	9/21/00

REV.	B
SIZE:	C
SHEET:	4 OF 4





ALESIS 9-40-0206-B "TOPTRACE"

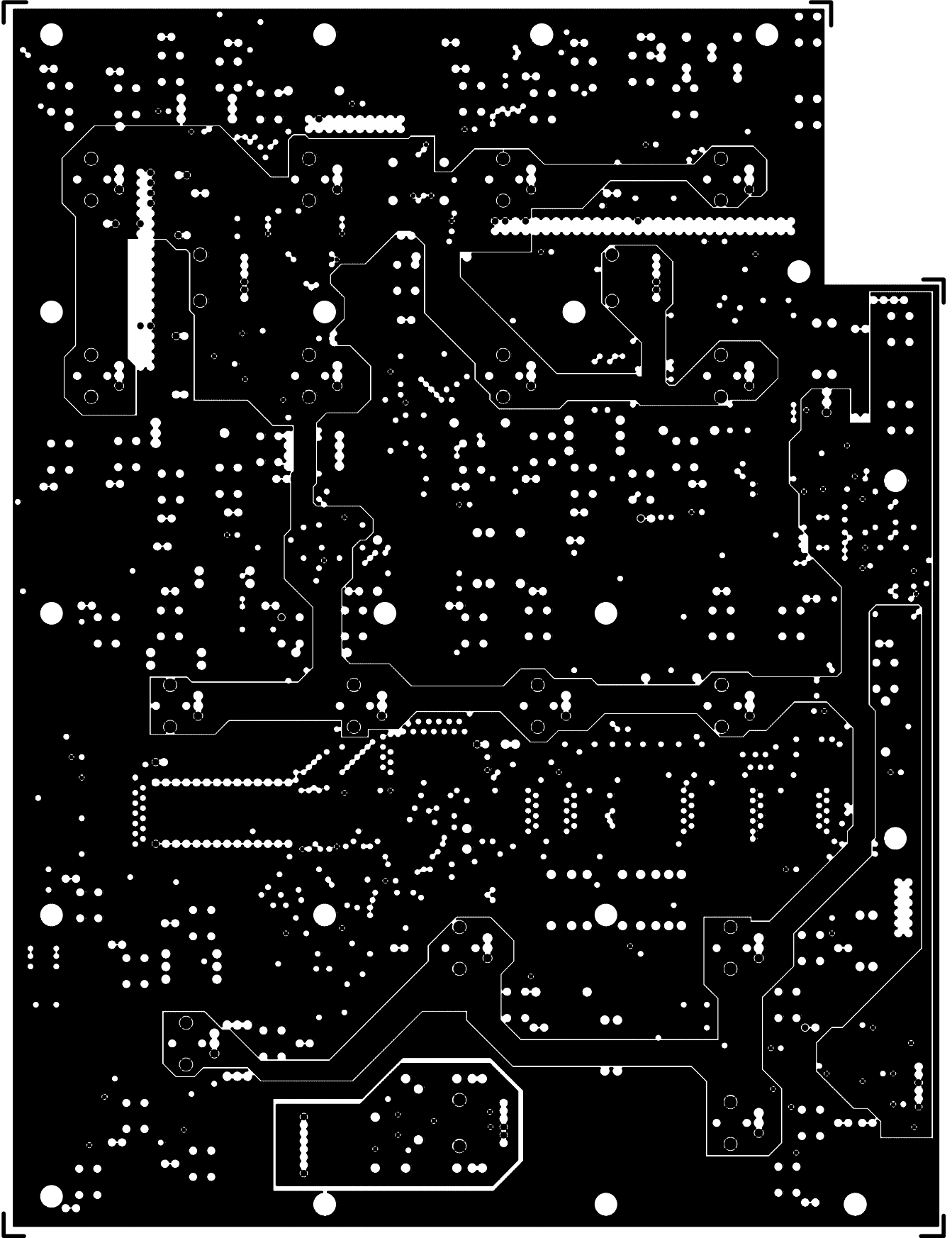




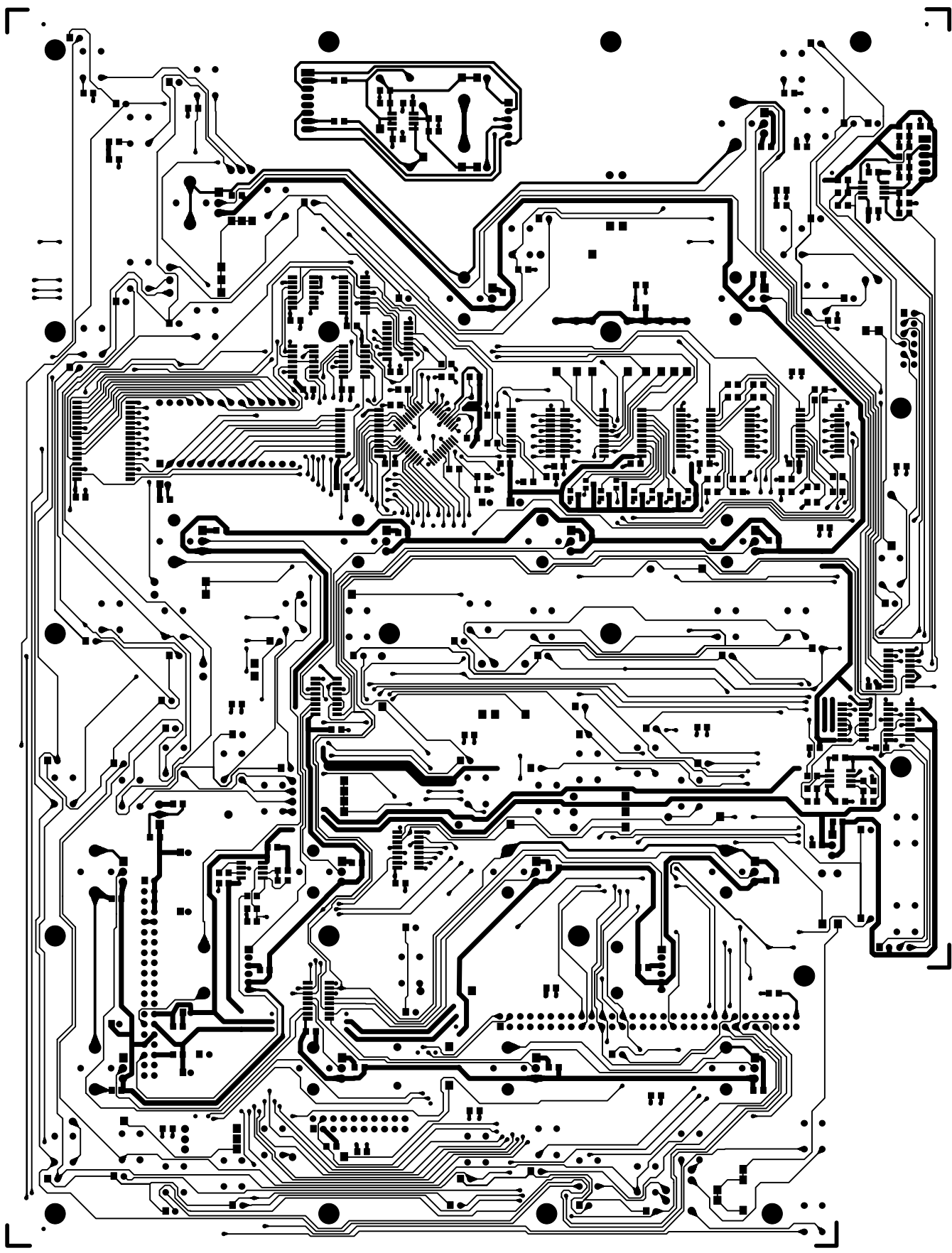
ALESIS 9-40-0206-B "GNDPLANE LAYER 2"





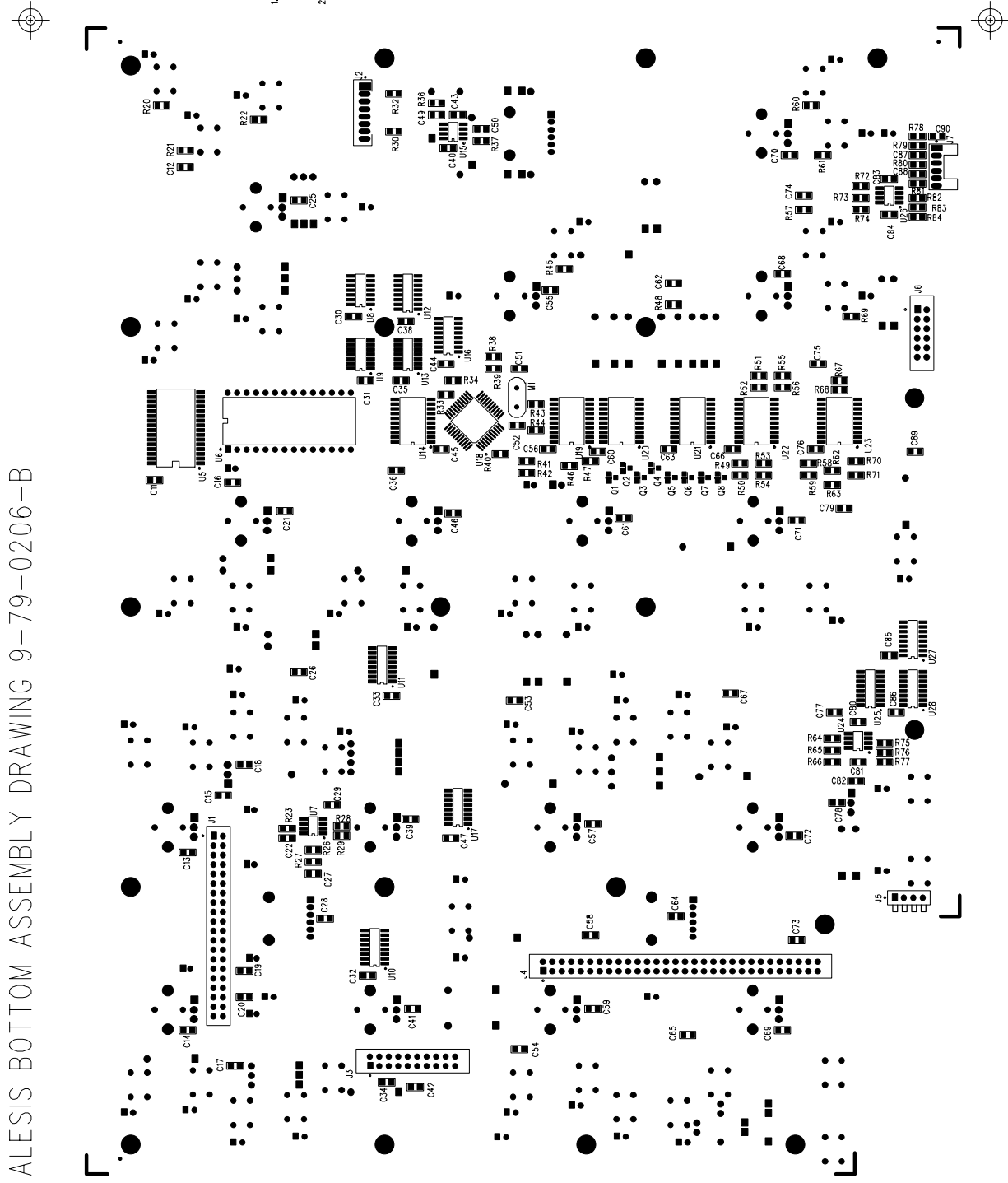


ALESIS 9-40-0206-B "PWRPLANE LAYER 3"

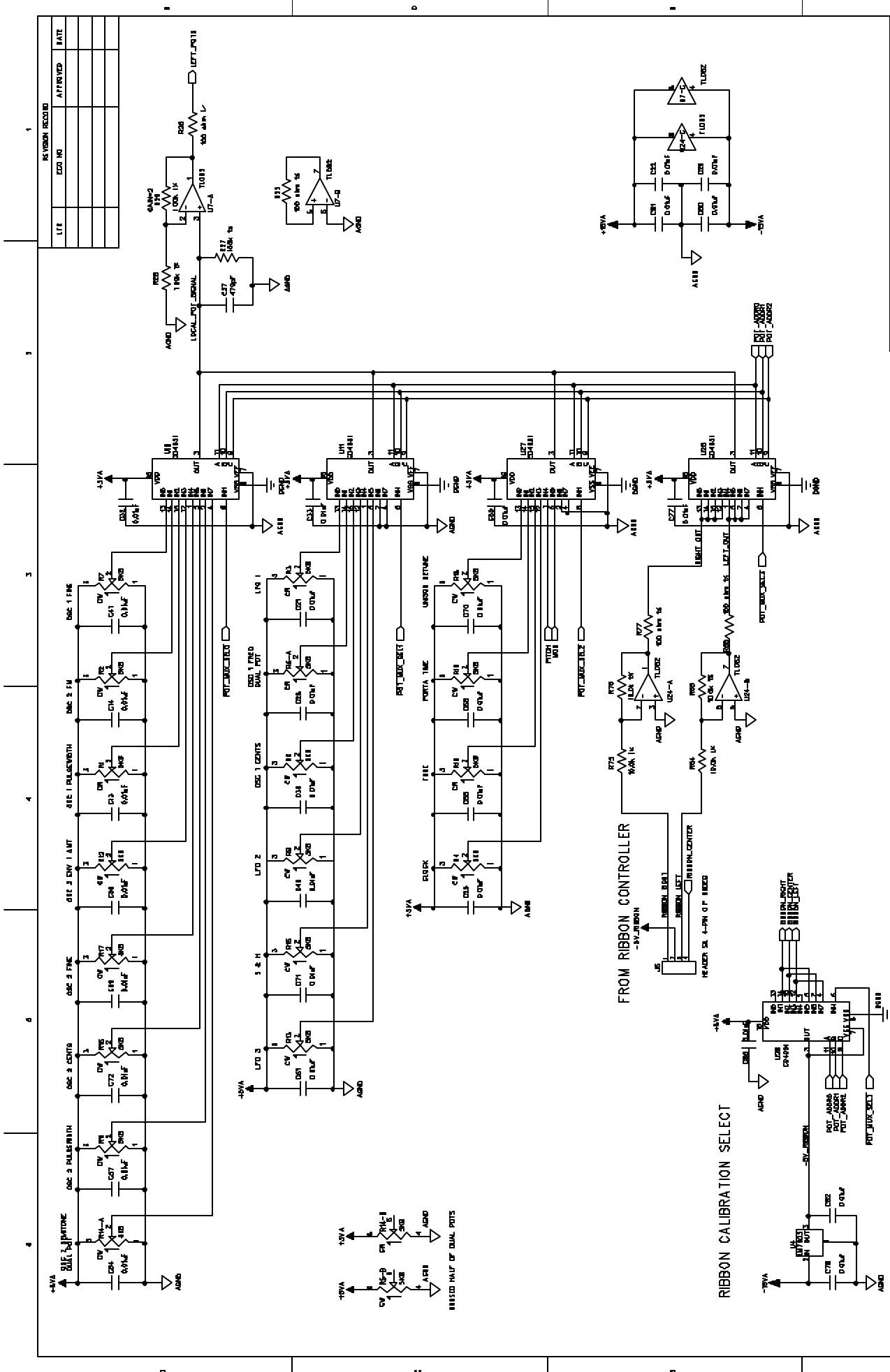


ALESIS 9-40-0206-B "BOTTRACE"

ALESIS BOTTOM ASSEMBLY DRAWING 9-79-0206-B



1. Mount the following parts on the bottomside of the PCB and hand solder on the topside: Headers J1-7 (4-14-000, 4-15-000, 4-16-000), crystal U1 (7-01-0028) and hand solder.
2. Right angle header J5 (4-15-0404) should be mounted with pins pointing toward board edge.



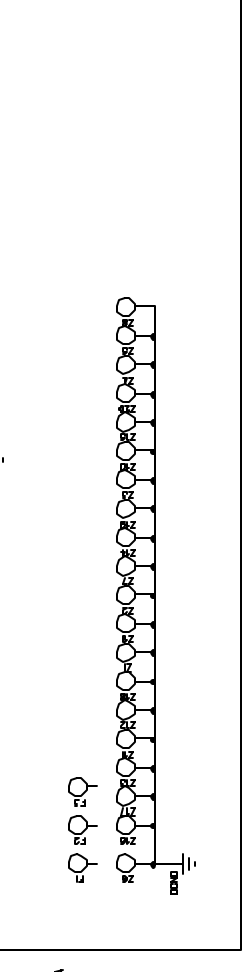
REVISION RECORD	
LIFE	DATE

COMPANY	ALESIS
TITLE	A6 FRONT PANEL LEFT
PART NUMBER	B-40-D206-C
ASST NUMBER	9-79-0206
FILENAME	ABFLC00A.SCH
SCALE	

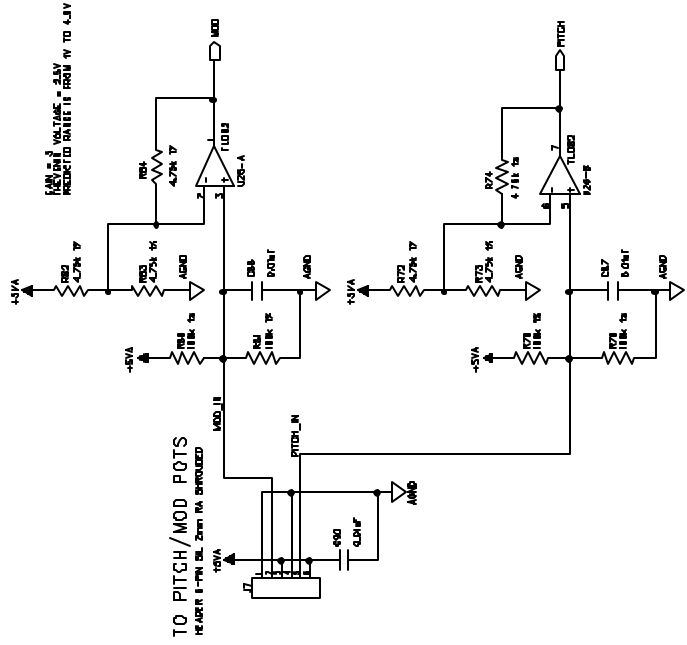
ESTIMATED POWER CONSUMPTION: 27V SUPPLY 100mA FROM 500 OHMS

DRAWN	DEAN SHH
DATE	11/18/01
RELEASED	

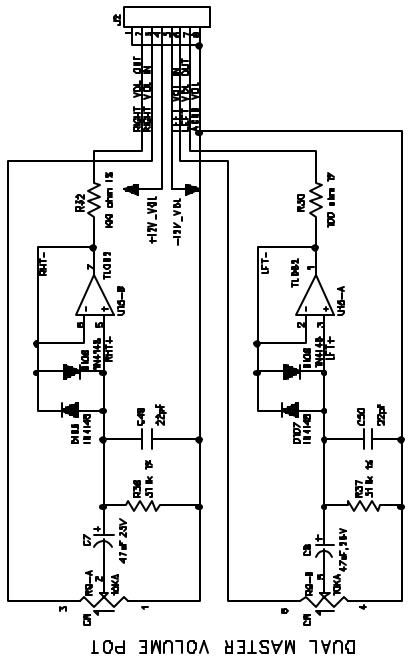
REV	C
SIZE	C
SHEET	1 OF 4



LIFE	ISSUES RECORDED	APPROVED	DATE

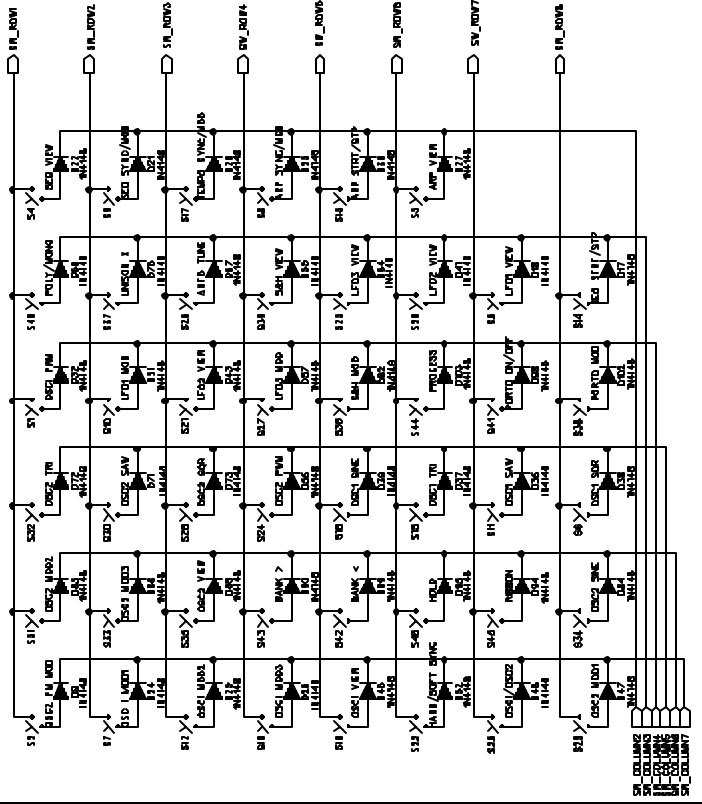


TO PITCH/MOD POTS  
HEADER 1-PIN DL 2MM (A) SHROUDED

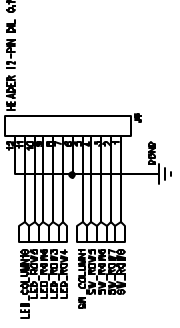


DUAL MASTER VOLUME POT

TO ANALOG MAIN PCB



TO PITCH/MOD PCB  
Use .1" shrouded connector in BOM

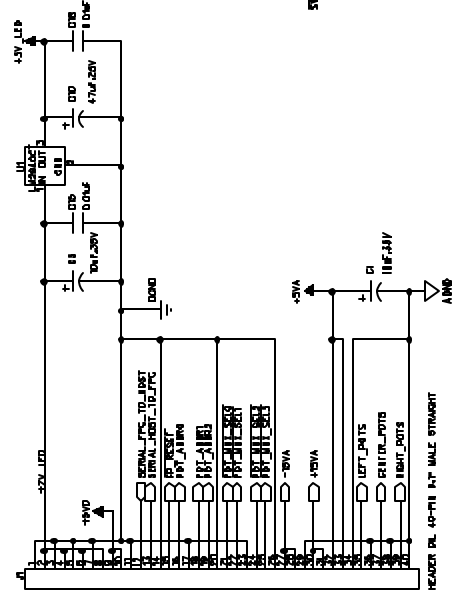


COMPANY	ALESIS
TITLE	A6 FRONT PANEL LEFT
PART NUMBER	B-40-D206-C
ASST NUMBER	9-79-0206
FILENAME	ABFLC00A.SCH
SCALE	

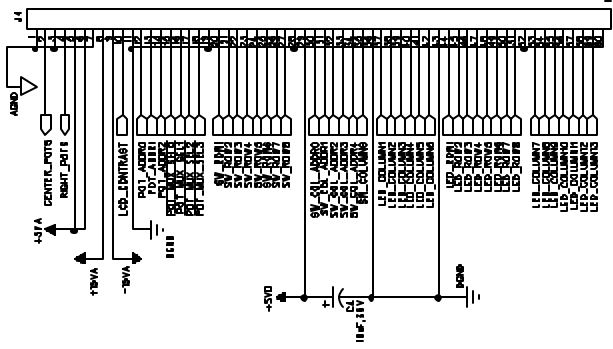
DESIGNED BY	DATE	10/29/01
RELEASED	DATE	

REVISION RECORD	
LIFE	DATE

TO DIGITAL MAIN PCB

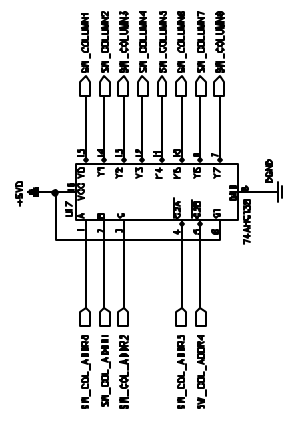
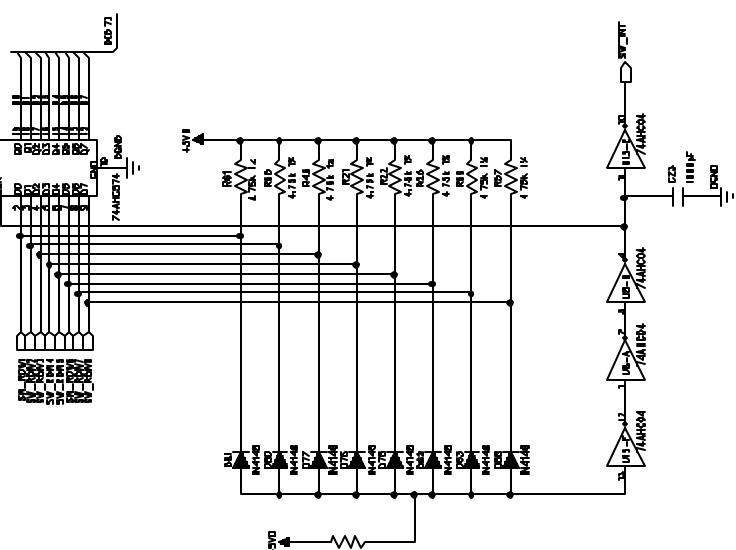


TO CENTER AND RIGHT FP POBS



Right Board 5/L

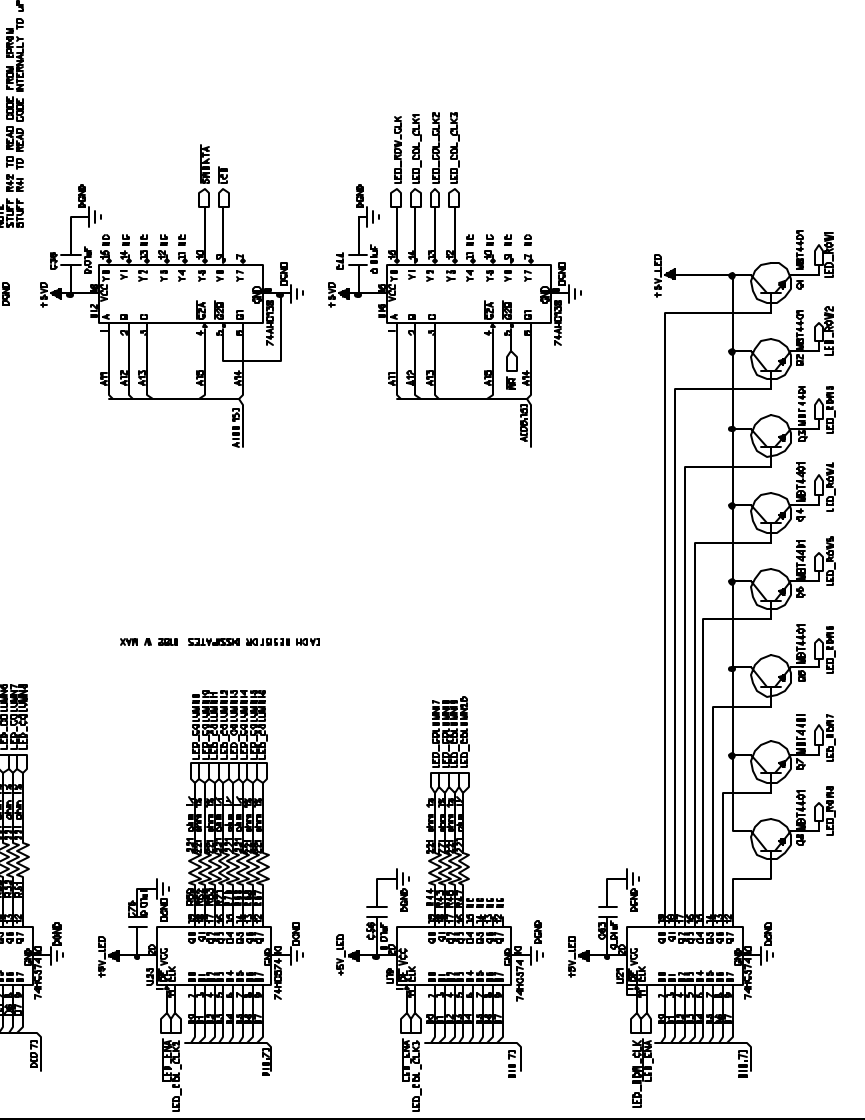
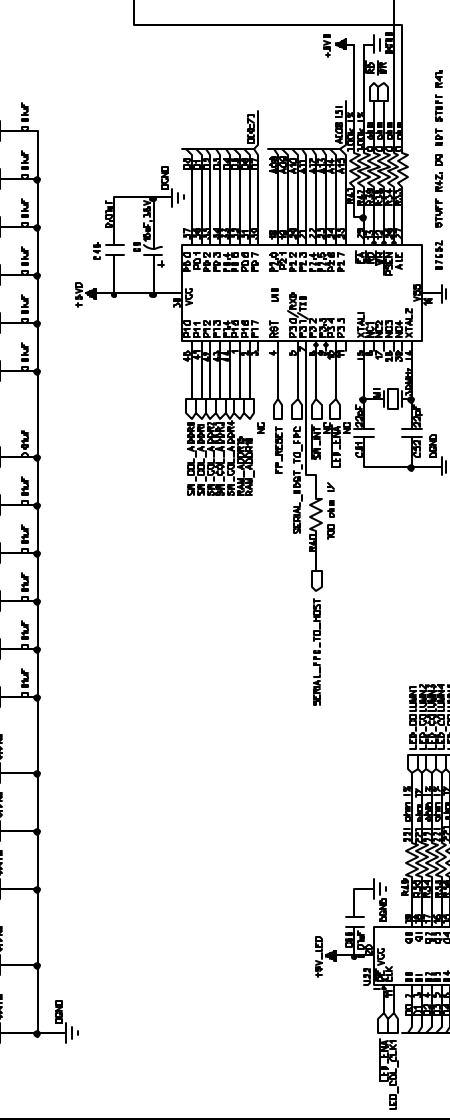
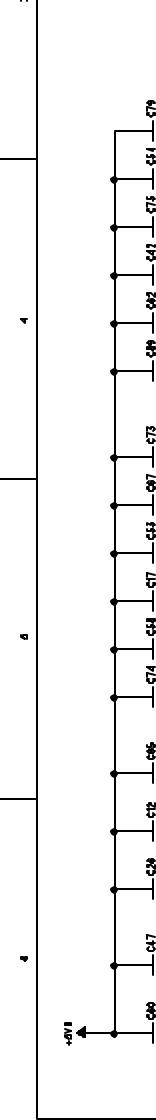
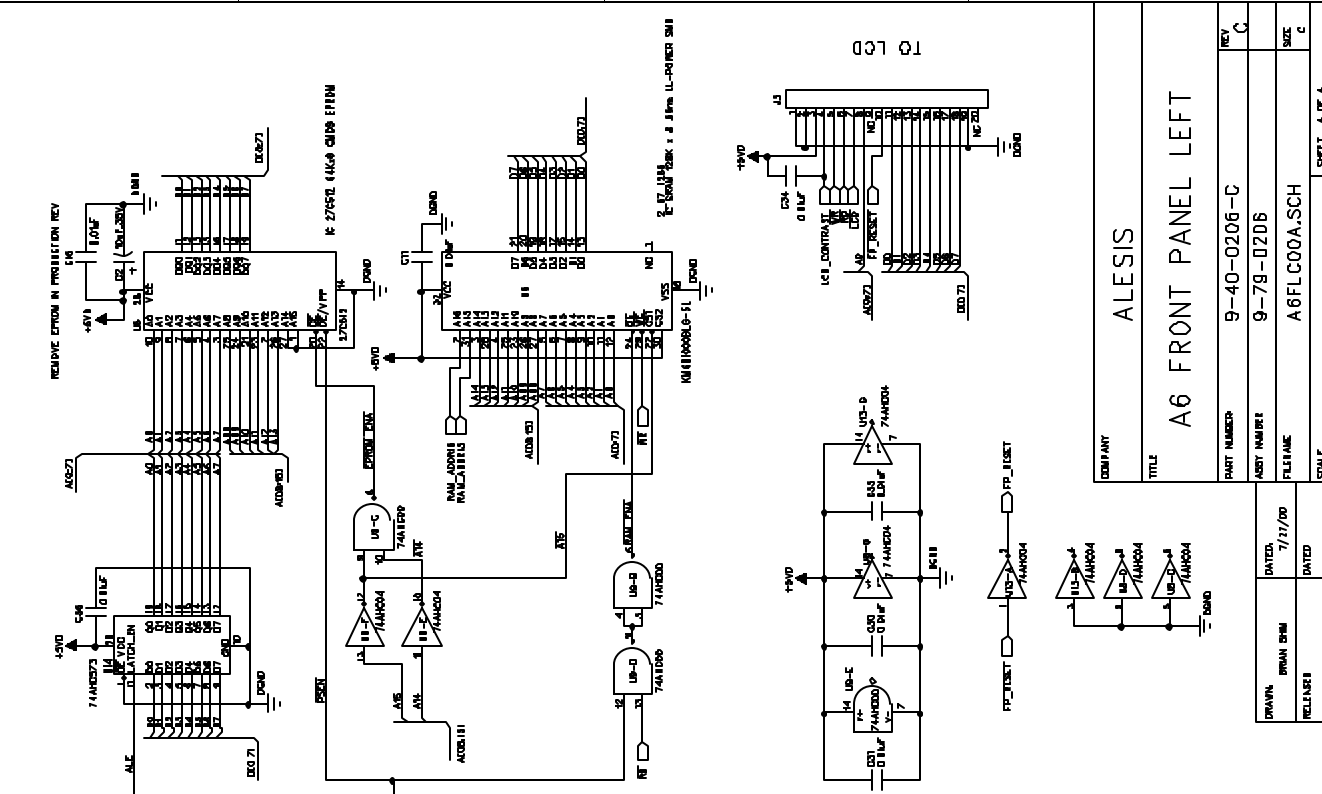
HEADER DL 11-776 D17 MALE



COMPANY	ALESIS
TITLE	A6 FRONT PANEL LEFT
PART NUMBER	9-40-0206-C
ASST NUMBER	9-79-0206
FILENAME	A6FLC00A.SCH
SCALE	SHEET 3 OF 4

DRAWN	BRAN BSM	DATE	11/11/01
RELEASE		DATE	

DATE	APPROVED	BY



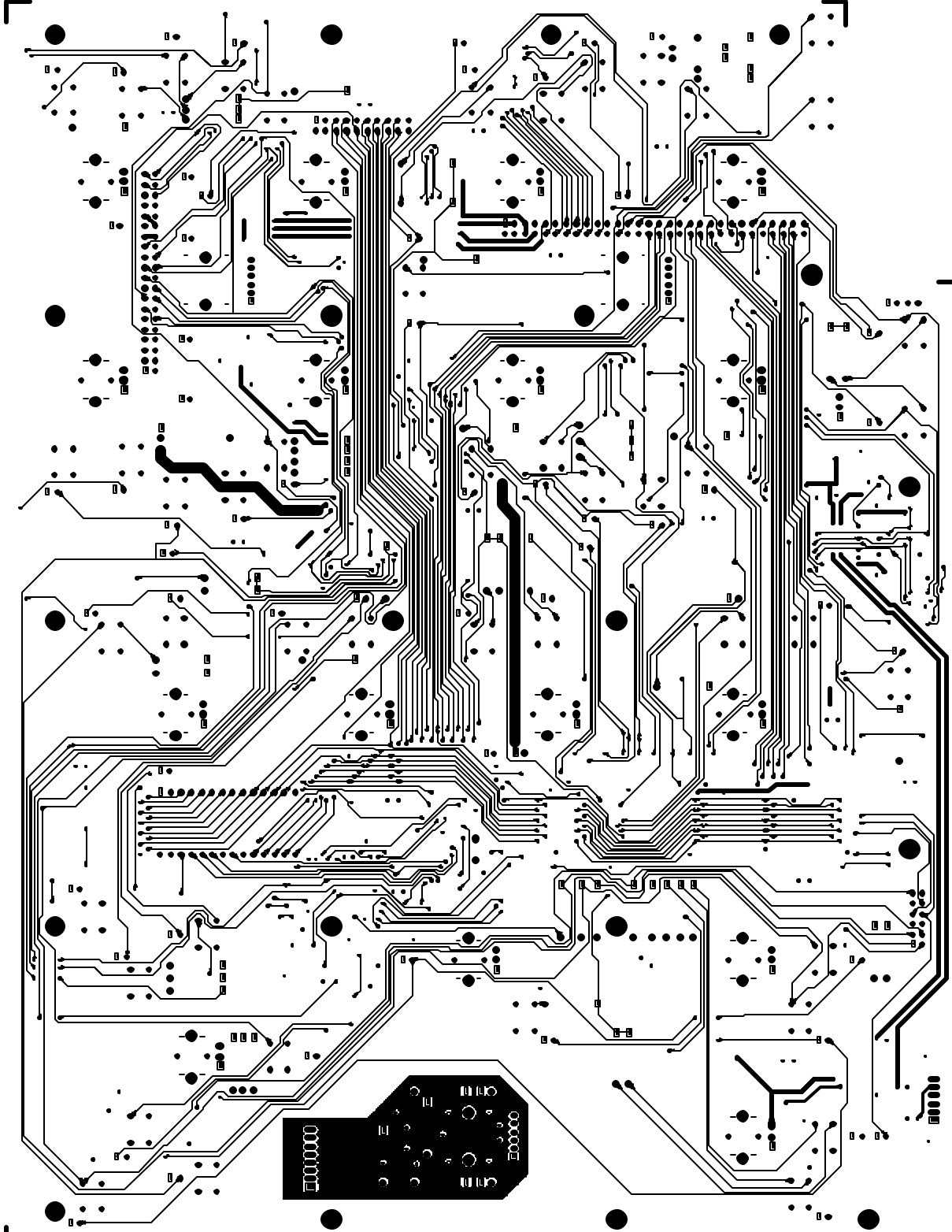
COMPANY	ALESIS
TITLE	A6 FRONT PANEL LEFT
PART NUMBER	9-40-0206-C
ASST NUMBER	9-79-0206
FILENAME	A6FLC00A.SCH
SCALE	

DATE	7/11/00
DESIGNER	BRAIN BISH
DATE	
REVISION	

REV	
SIZE	
SHEET	4 OF 4

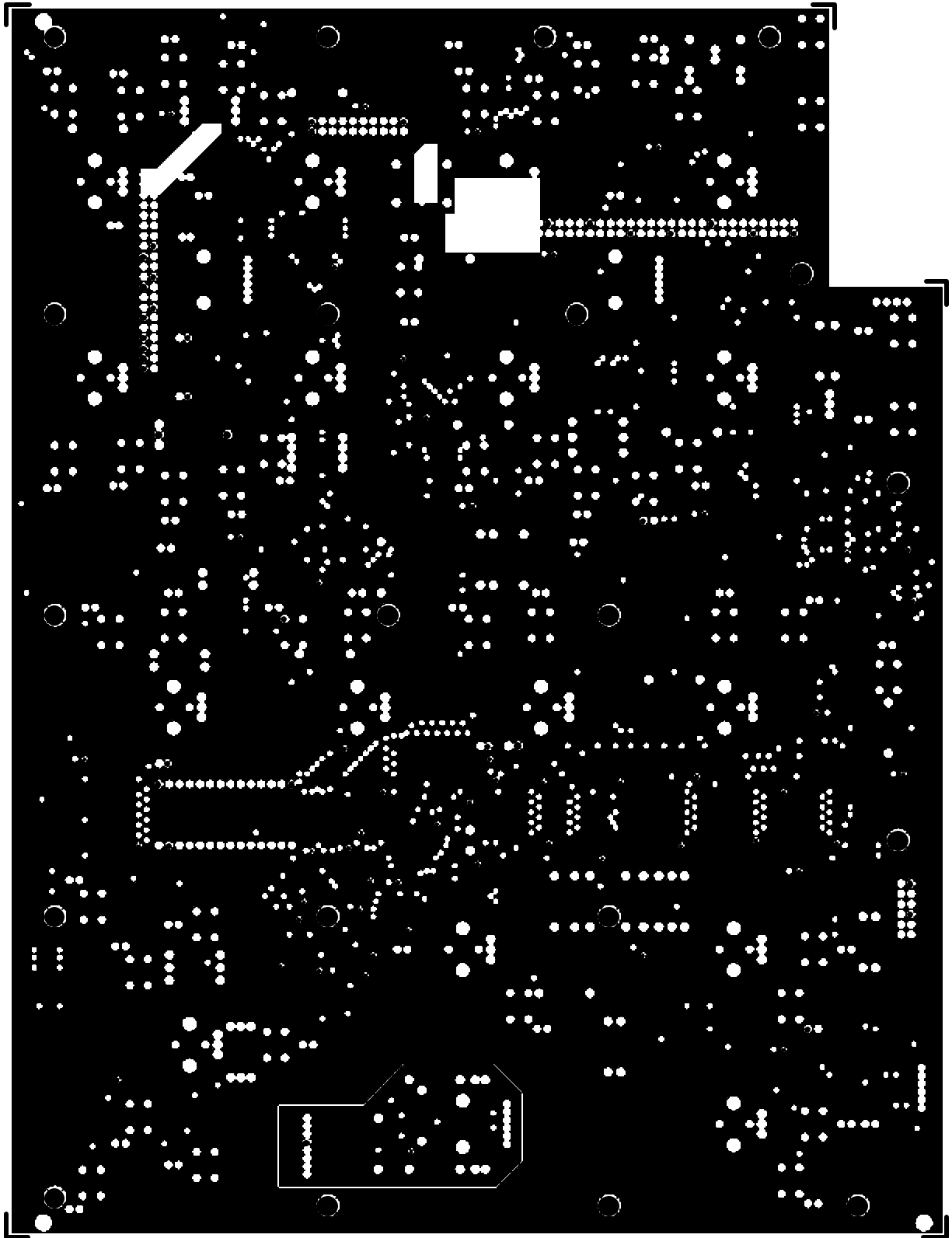






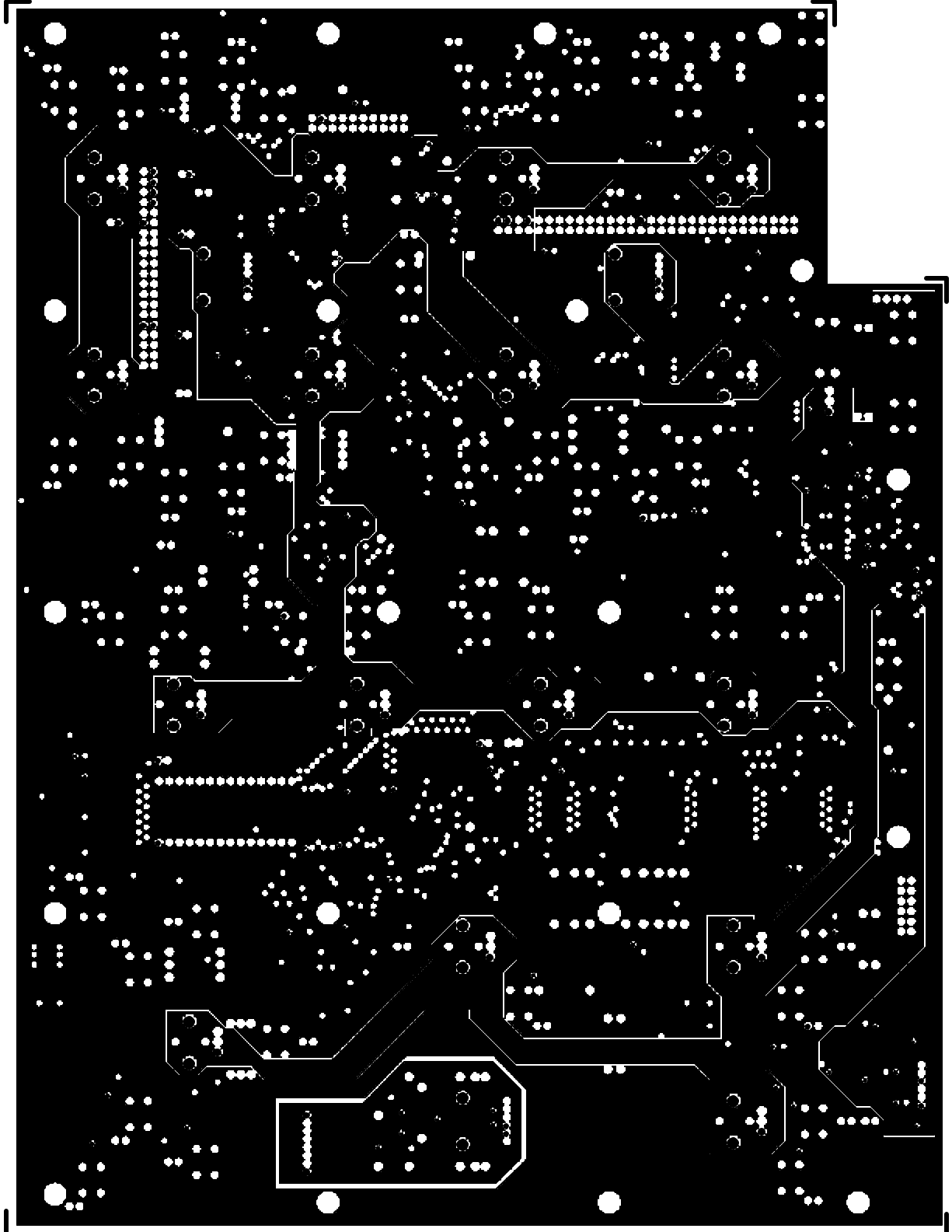
ALESIS 9-40-0206-C "TOPTRACE"





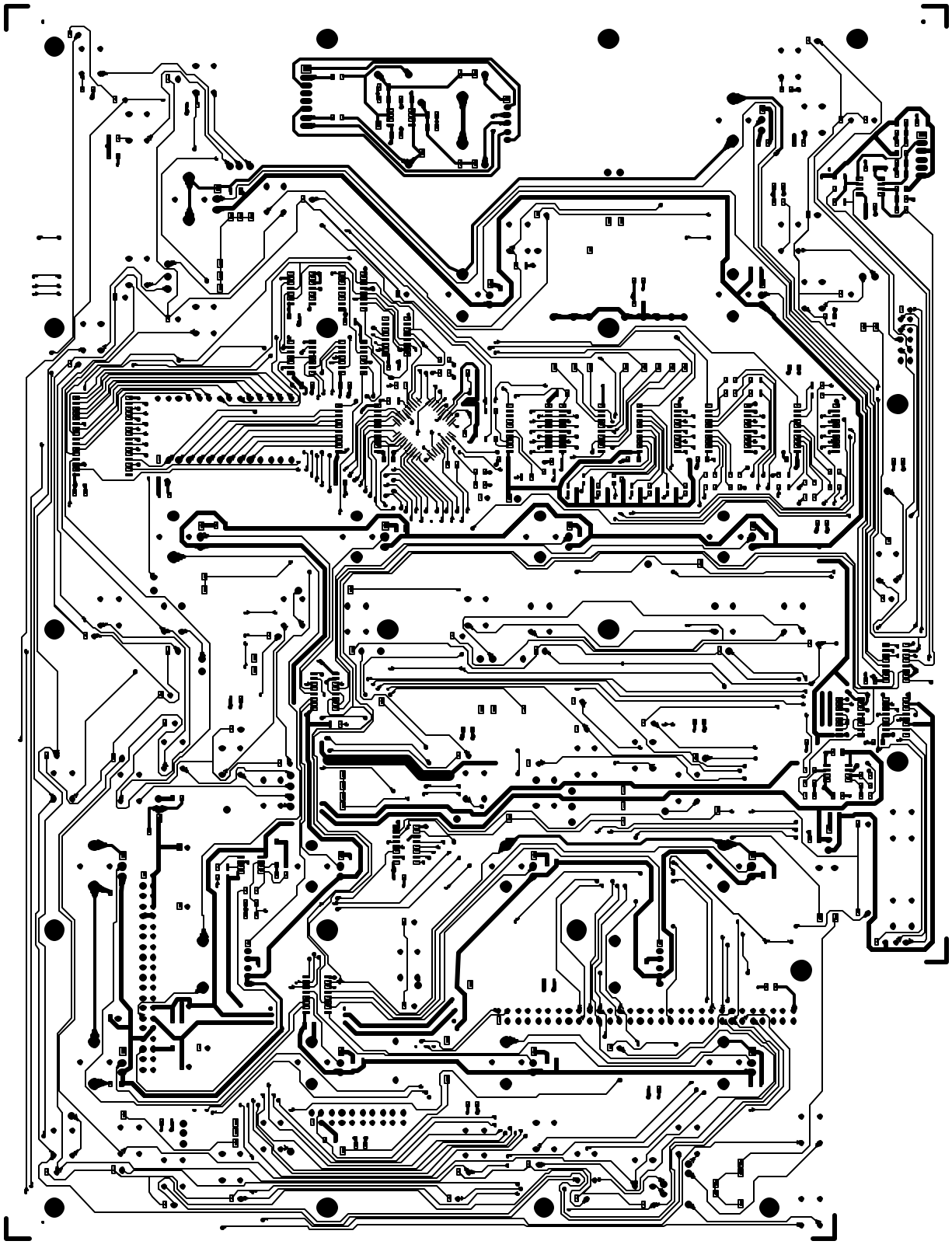
ALESIS 9-40-0206-C "GNDPLANE LAYER 2"





ALESIS 9-40-0206-C "PWRPLANE LAYER 3"





ALESIS 9-40-0206-C "BOTTRACE"