

ALESIS

A6 Andromeda (A6)

Service Manual

P/N: 8-31-0089-C

ATTENTION!

THIS DOCUMENT CONTAINS SENSITIVE
PROPRIETARY INFORMATION. ALL
RECIPIENTS MUST HAVE A CURRENT NON-
DISCLOSURE AGREEMENT ON FILE WITH
ALESIS, LLC.

**DO NOT DISTRIBUTE THIS DOCUMENT IN
ELECTRONIC FORM**

The information in this document contains privileged and confidential information. It is intended only for the use of those authorized by Alesis. If you are not the authorized, intended recipient, you are hereby notified that any review, dissemination, distribution or duplication of this document is strictly prohibited. If you are not authorized, please contact Alesis and destroy all copies of this document. You may contact Alesis at support@Alesis.com.

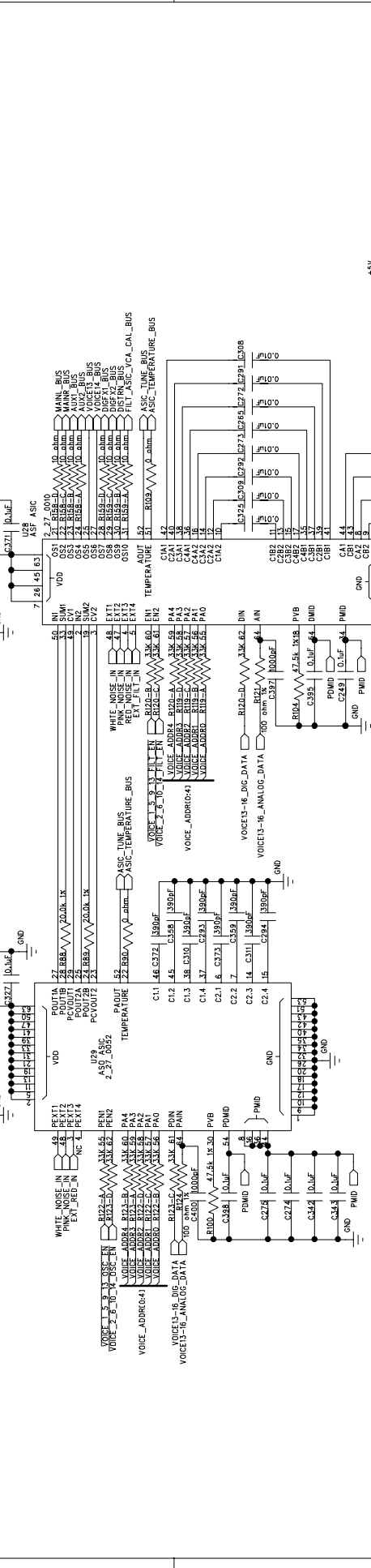
Copyright © 2003 Alesis, LLC

ALESIS ANDROMEDA (A6)

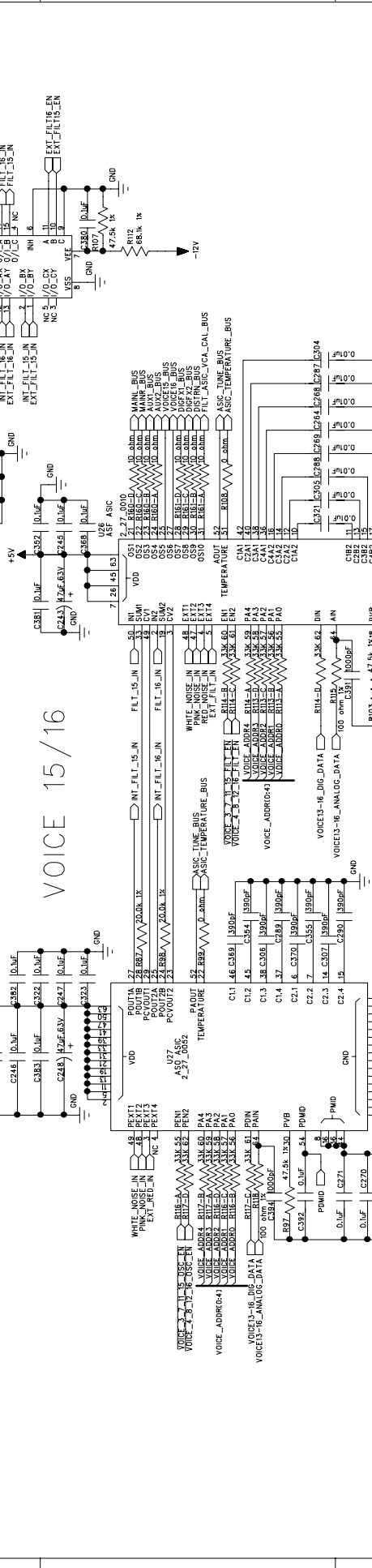
SCHEMATIC FILES PCB FILES

6		5		4		3		2		1	
REVISION RECORD											
LTR	ECCO NO:		APPROVED:		DATE:						

VOICE 13/14



VOICE 15/16

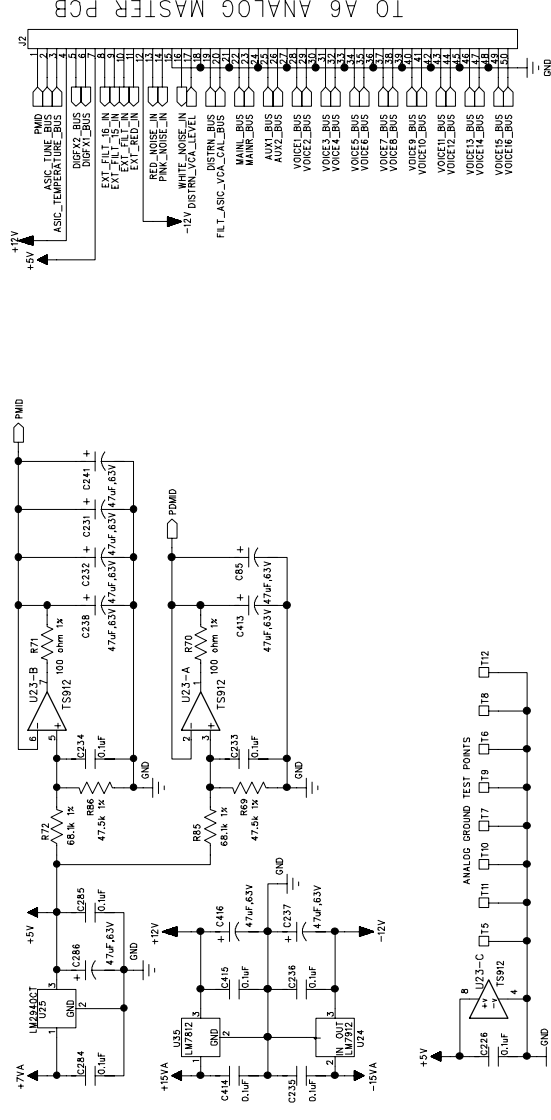


COMPANY:		ALESIS	
TITLE:		A6 ANALOG ASIC PCB VOICES 13-16	
PART NUMBER:		9-40-0210-C	
ASSY NUMBER:		9-79-0210	
FILENAME:		A6AAC06A.SCH	
SCALE:		SHEET. 5 OF 6	

DRAWN:	JOY KIO	DATED:	2/01
RELEASED:		DATED:	

REV/C			
SIZE:		C	

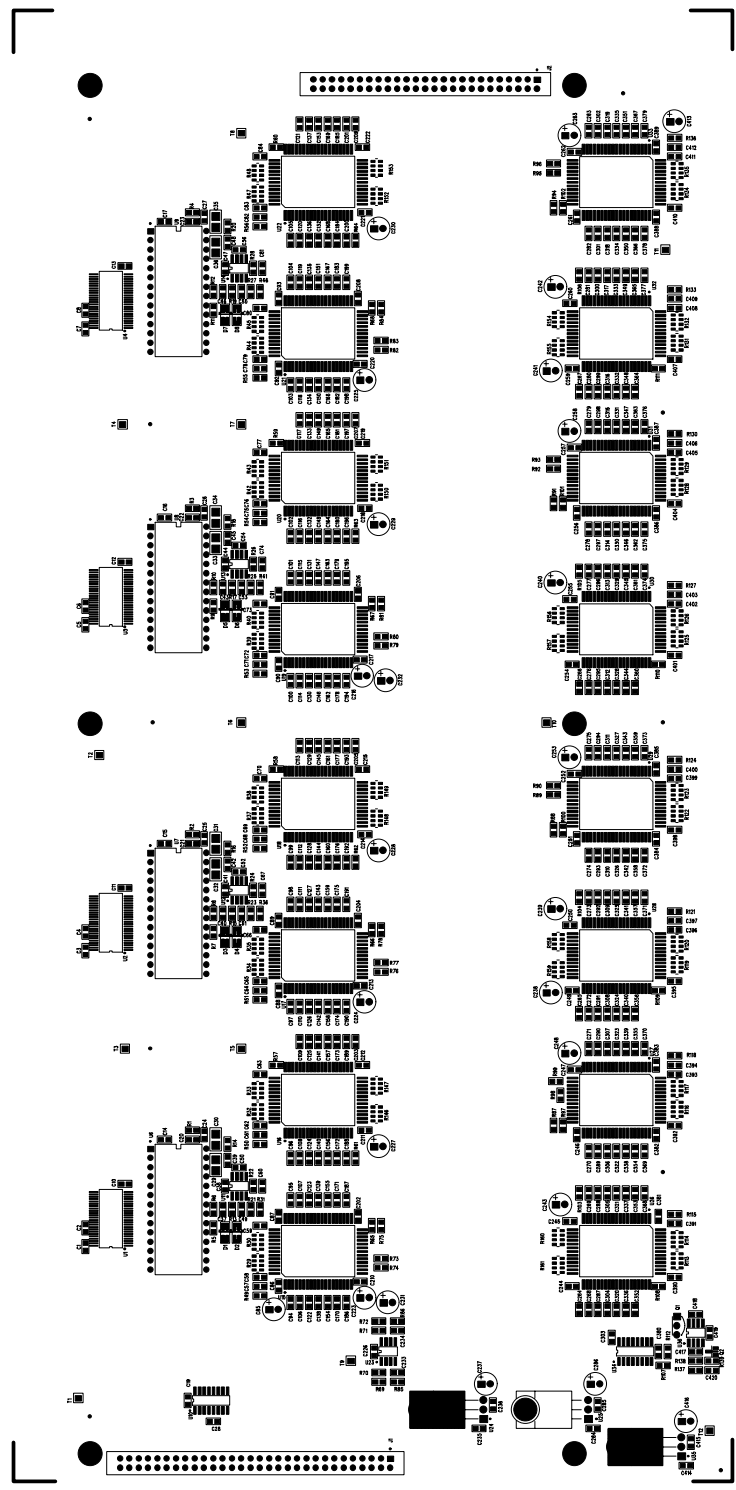
REVISION RECORD	
LTR	DATE:



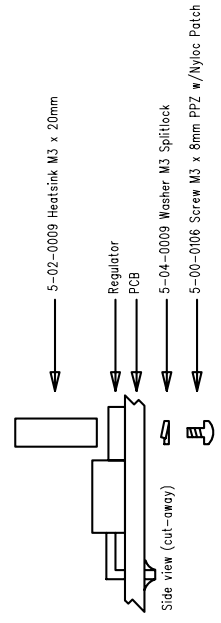
TO A6 ANALOG MASTER PCB

COMPANY:		ALESIS	
TITLE:		A6 ANALOG ASIC PCB MISCELLANEOUS	
PART NUMBER:	9-40-0210-C	REV/C:	
ASSY NUMBER:	9-79-0210	SIZE:	C
FILENAME:	A6AAC06A.SCH	SHEET:	6 OF 6
DRAWN:	Joy Kito	DATED:	2/01
RELEASED:		DATED:	

ALESIS 9-40-0210-C "TOPASSY"

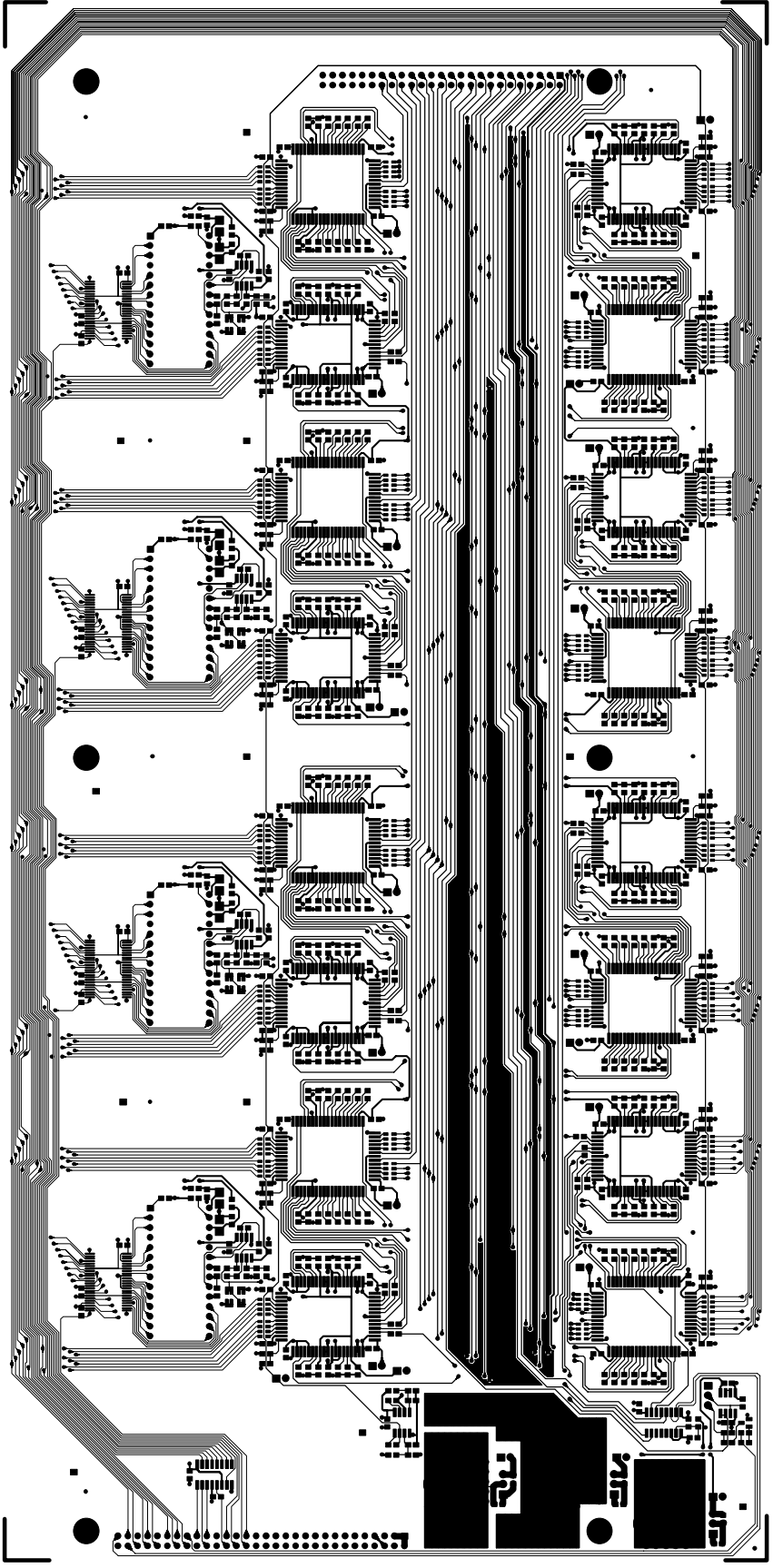


Mounting Instructions for U24, U25, and U35
(to be assembled before soldering).



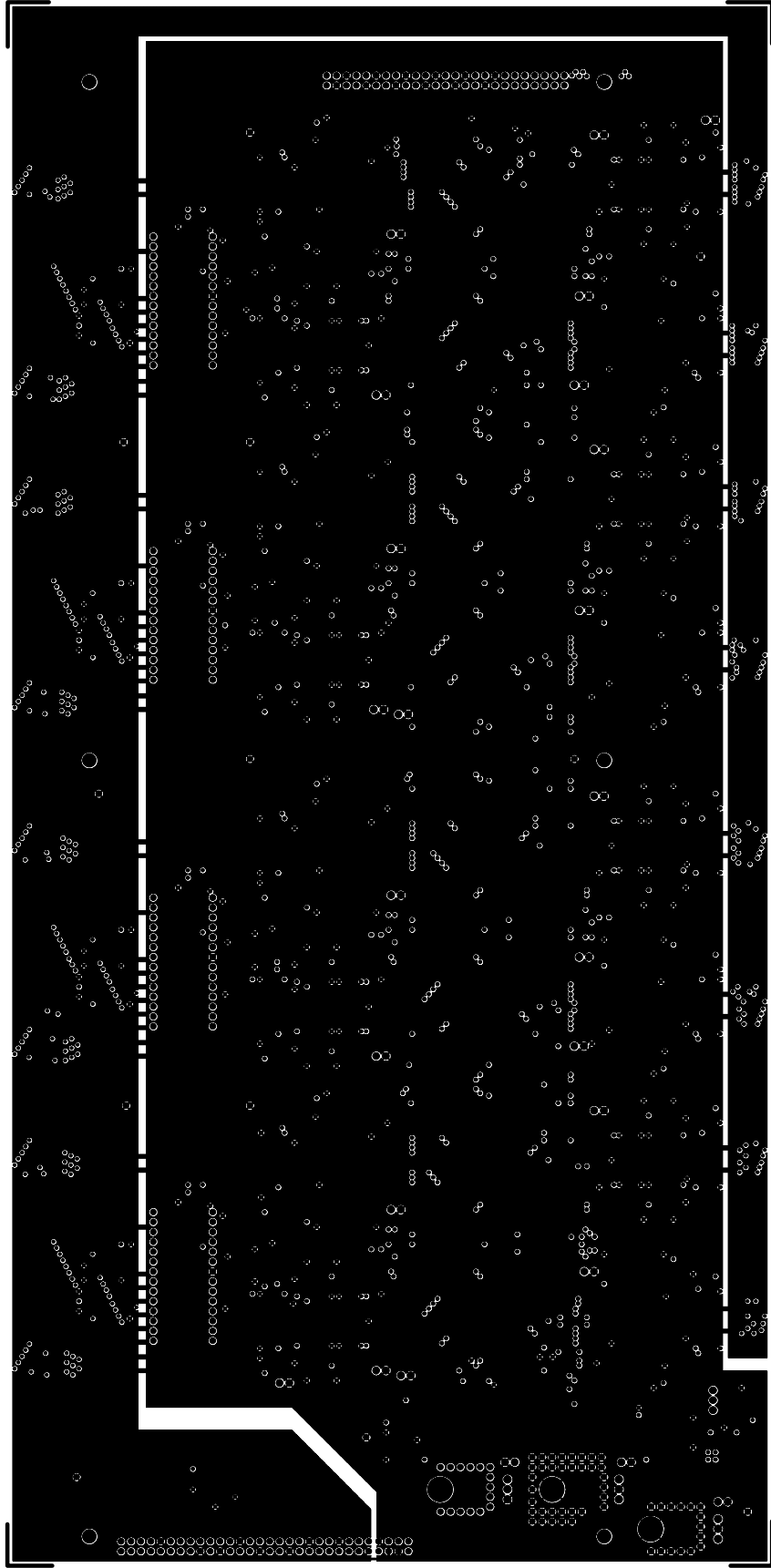


ALESIS 9-40-0210-C "TOPTRACE"



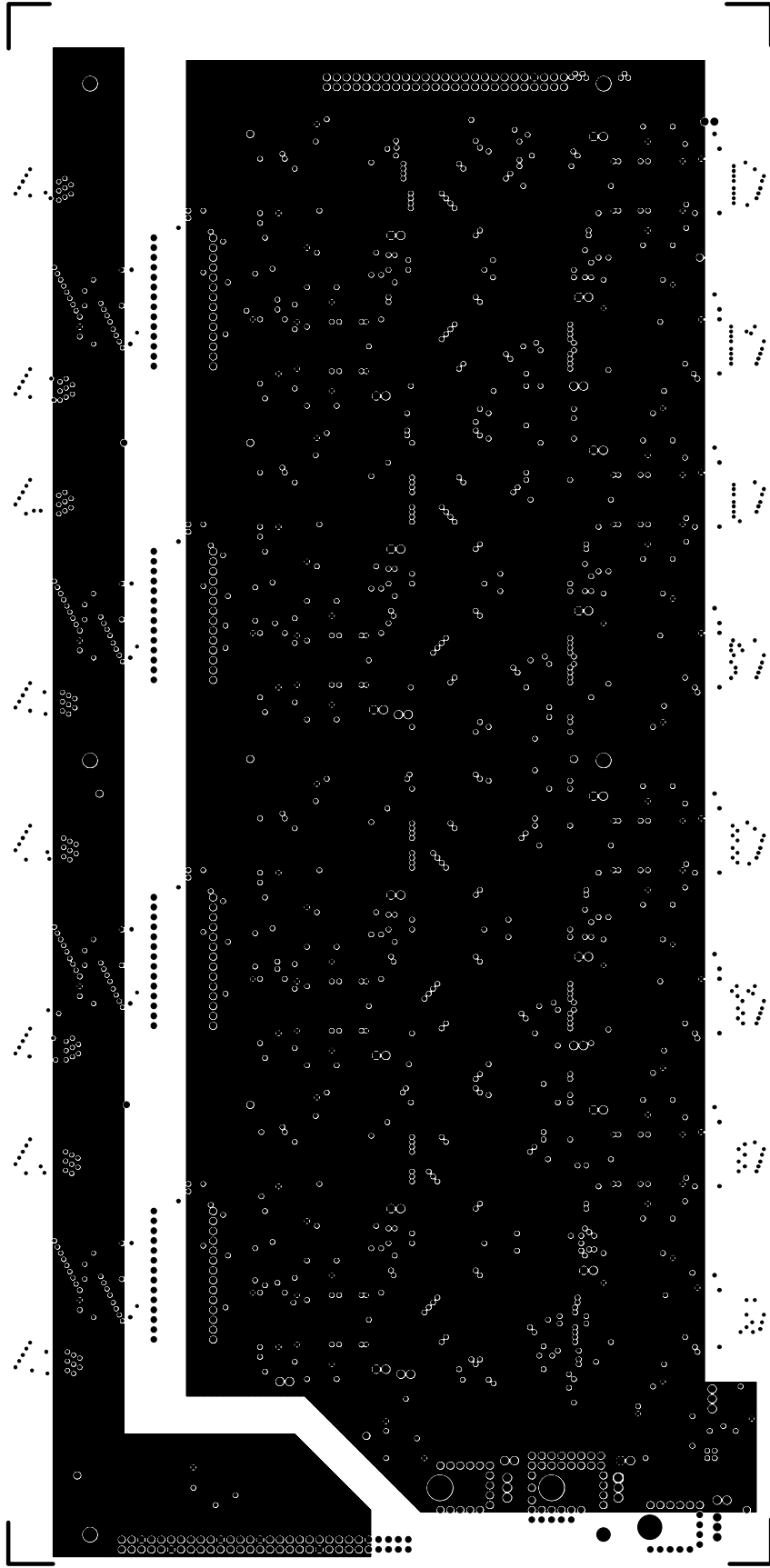


ALESIS 9-40-0210-C "GNDFLANE LAYER 2"



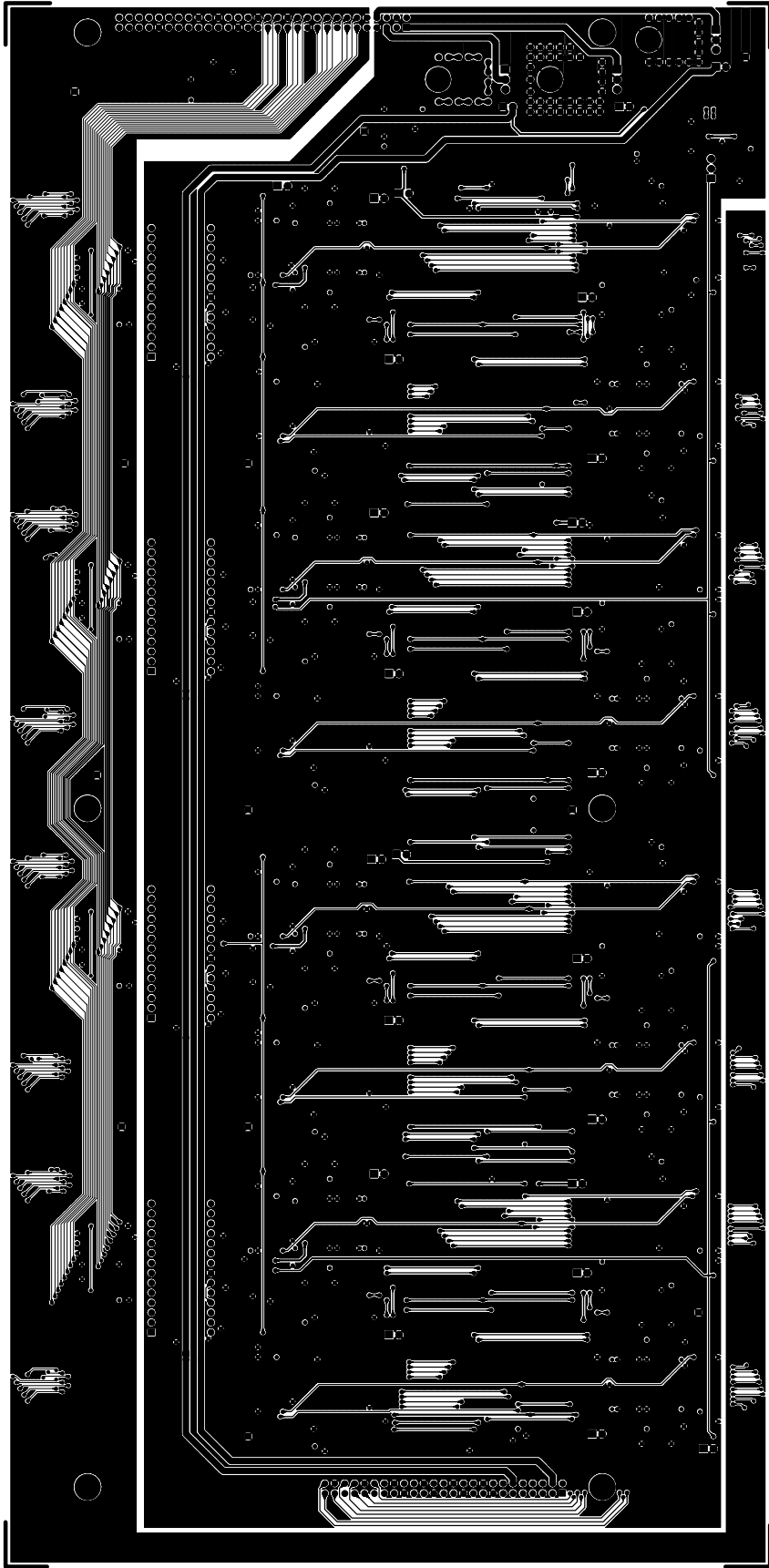


ALESIS 9-40-0210-C "PWRPLANE LAYER 3"



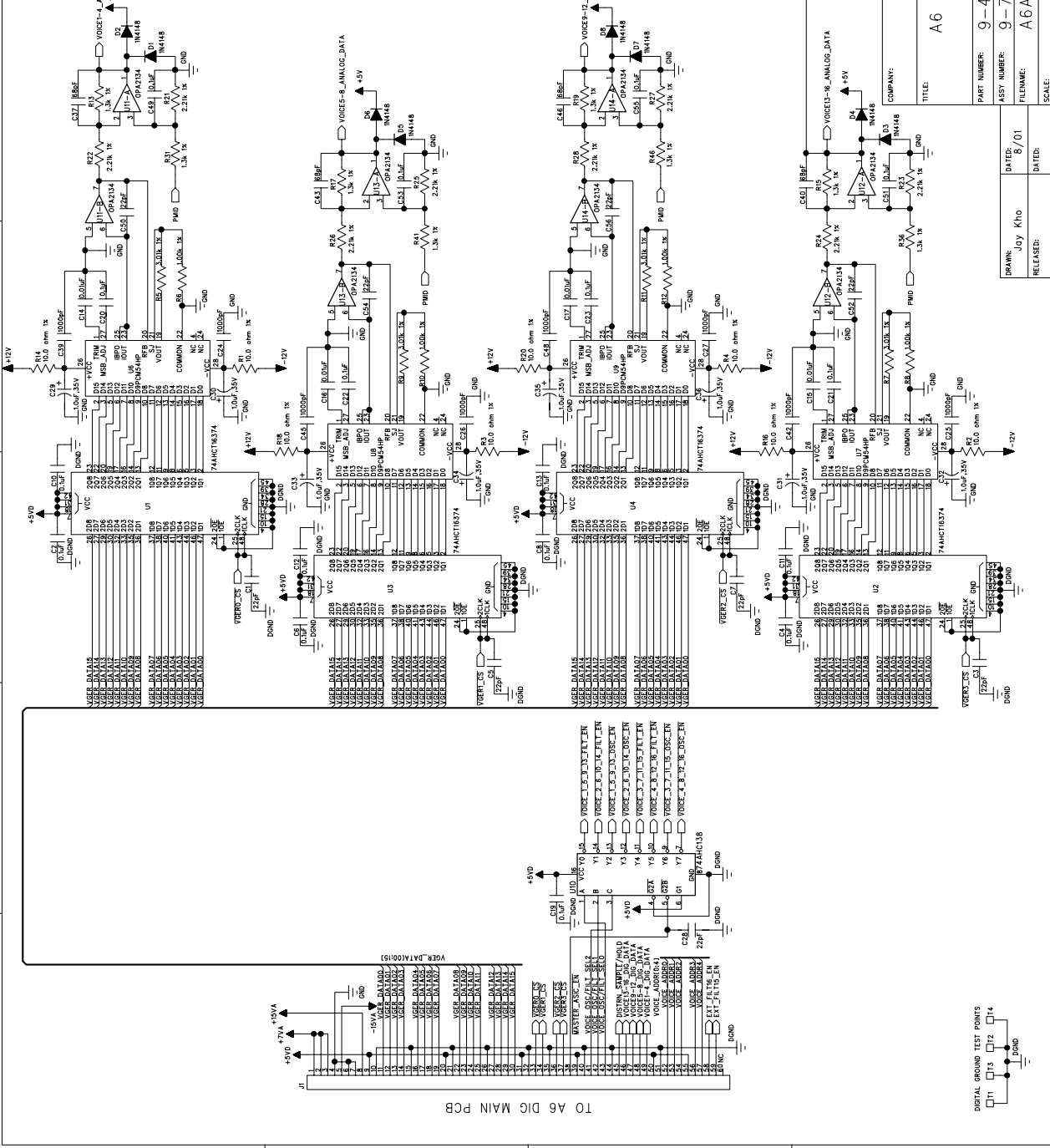


ALESIS 9-40-0210-C "BOTTRACE"



REVISION RECORD	
ECO NO.:	APPROVED: DATE:
LTR:	

1
2
3
4
5
6



D

C

B

A

ALESIS
A6 ANALOG ASIC PCB
VGER

PART NUMBER: 9-40-0210-D
ASST NUMBER: 9-79-0210
FILENAME: A6AAD01A.SCH
SCALE: SHEET: 1 OF 6

COMPANY: DATE: 8/01
DRAWN: JOY KTO
RELEASED:

REVISY
REVISE

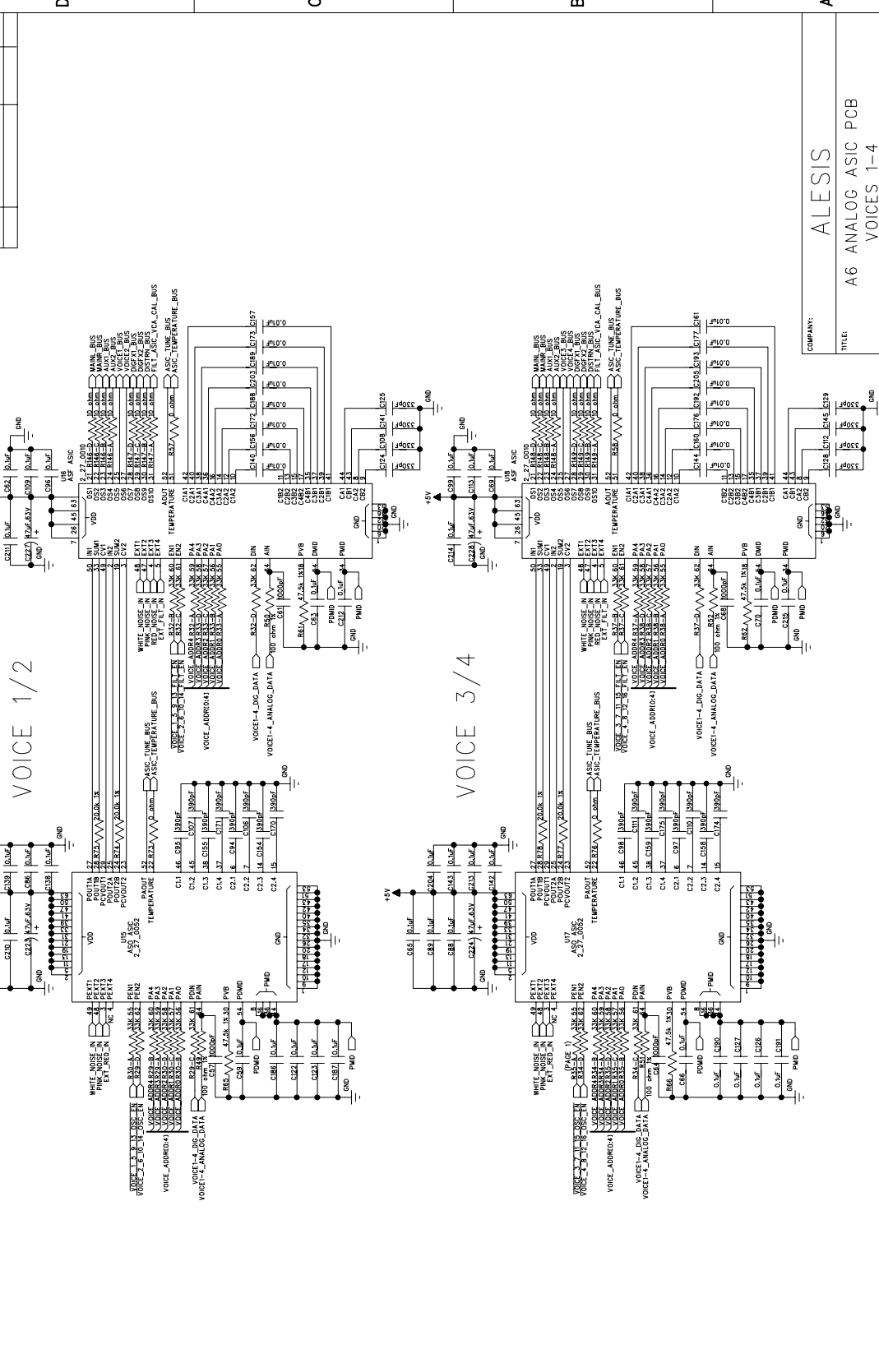
DISTRI_VCA_LEVEL

DISTRI_SUMPT/HOLD

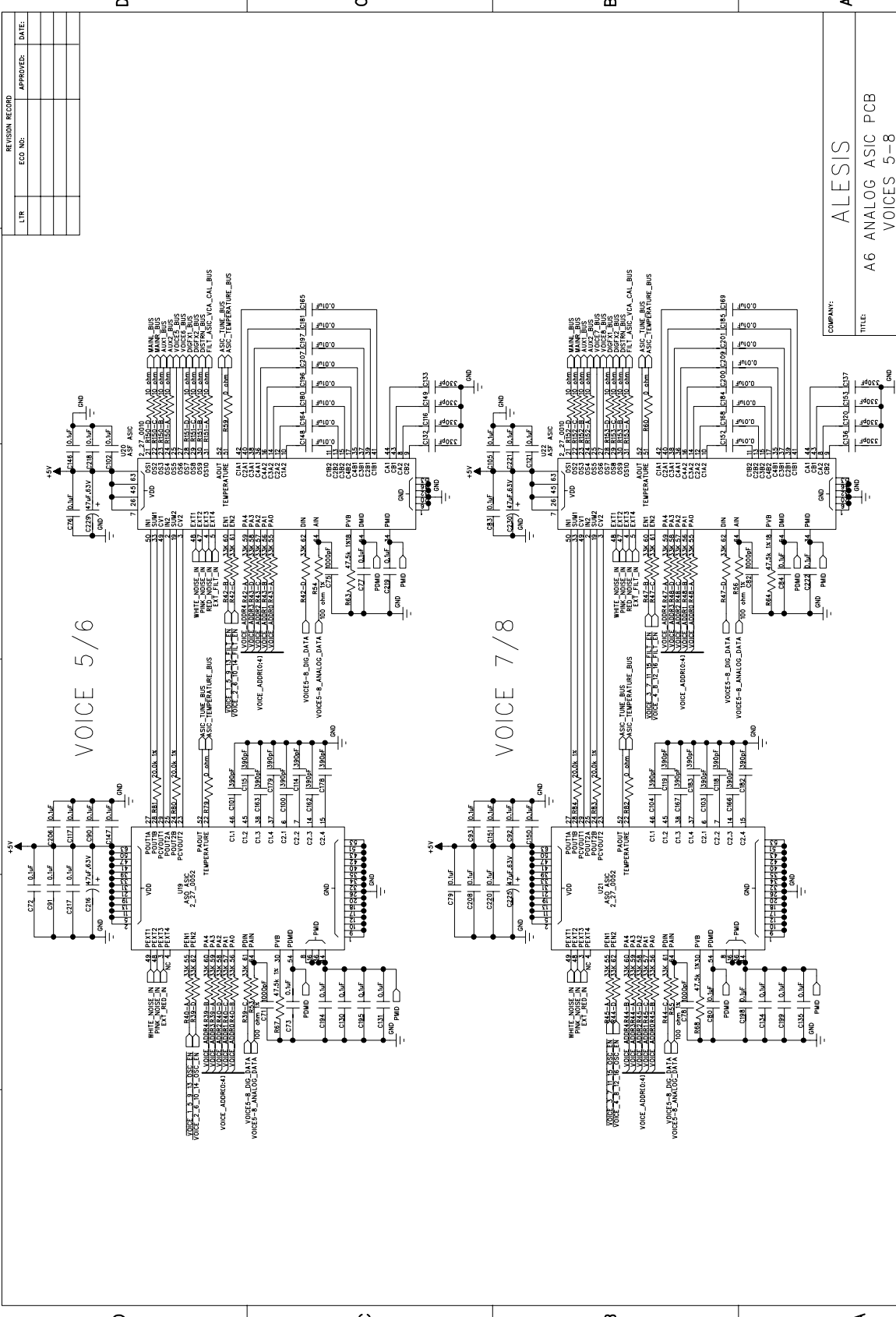
VOICES-12_ANALOG_DATA
VOICES-13_ANALOG_DATA
VOICES-14_ANALOG_DATA
VOICES-15_ANALOG_DATA
VOICES-16_ANALOG_DATA
VOICES-17_ANALOG_DATA
VOICES-18_ANALOG_DATA
VOICES-19_ANALOG_DATA
VOICES-20_ANALOG_DATA
VOICES-21_ANALOG_DATA
VOICES-22_ANALOG_DATA
VOICES-23_ANALOG_DATA
VOICES-24_ANALOG_DATA
VOICES-25_ANALOG_DATA
VOICES-26_ANALOG_DATA
VOICES-27_ANALOG_DATA
VOICES-28_ANALOG_DATA
VOICES-29_ANALOG_DATA
VOICES-30_ANALOG_DATA
VOICES-31_ANALOG_DATA
VOICES-32_ANALOG_DATA
VOICES-33_ANALOG_DATA
VOICES-34_ANALOG_DATA
VOICES-35_ANALOG_DATA
VOICES-36_ANALOG_DATA
VOICES-37_ANALOG_DATA
VOICES-38_ANALOG_DATA
VOICES-39_ANALOG_DATA
VOICES-40_ANALOG_DATA
VOICES-41_ANALOG_DATA
VOICES-42_ANALOG_DATA
VOICES-43_ANALOG_DATA
VOICES-44_ANALOG_DATA
VOICES-45_ANALOG_DATA
VOICES-46_ANALOG_DATA
VOICES-47_ANALOG_DATA
VOICES-48_ANALOG_DATA
VOICES-49_ANALOG_DATA
VOICES-50_ANALOG_DATA
VOICES-51_ANALOG_DATA
VOICES-52_ANALOG_DATA
VOICES-53_ANALOG_DATA
VOICES-54_ANALOG_DATA
VOICES-55_ANALOG_DATA
VOICES-56_ANALOG_DATA
VOICES-57_ANALOG_DATA
VOICES-58_ANALOG_DATA
VOICES-59_ANALOG_DATA
VOICES-60_ANALOG_DATA
VOICES-61_ANALOG_DATA
VOICES-62_ANALOG_DATA
VOICES-63_ANALOG_DATA
VOICES-64_ANALOG_DATA
VOICES-65_ANALOG_DATA
VOICES-66_ANALOG_DATA
VOICES-67_ANALOG_DATA
VOICES-68_ANALOG_DATA
VOICES-69_ANALOG_DATA
VOICES-70_ANALOG_DATA
VOICES-71_ANALOG_DATA
VOICES-72_ANALOG_DATA
VOICES-73_ANALOG_DATA
VOICES-74_ANALOG_DATA
VOICES-75_ANALOG_DATA
VOICES-76_ANALOG_DATA
VOICES-77_ANALOG_DATA
VOICES-78_ANALOG_DATA
VOICES-79_ANALOG_DATA
VOICES-80_ANALOG_DATA
VOICES-81_ANALOG_DATA
VOICES-82_ANALOG_DATA
VOICES-83_ANALOG_DATA
VOICES-84_ANALOG_DATA
VOICES-85_ANALOG_DATA
VOICES-86_ANALOG_DATA
VOICES-87_ANALOG_DATA
VOICES-88_ANALOG_DATA
VOICES-89_ANALOG_DATA
VOICES-90_ANALOG_DATA
VOICES-91_ANALOG_DATA
VOICES-92_ANALOG_DATA
VOICES-93_ANALOG_DATA
VOICES-94_ANALOG_DATA
VOICES-95_ANALOG_DATA
VOICES-96_ANALOG_DATA
VOICES-97_ANALOG_DATA
VOICES-98_ANALOG_DATA
VOICES-99_ANALOG_DATA
VOICES-100_ANALOG_DATA

DIGITAL GROUND TEST POINTS
D1 D2 D3 D4

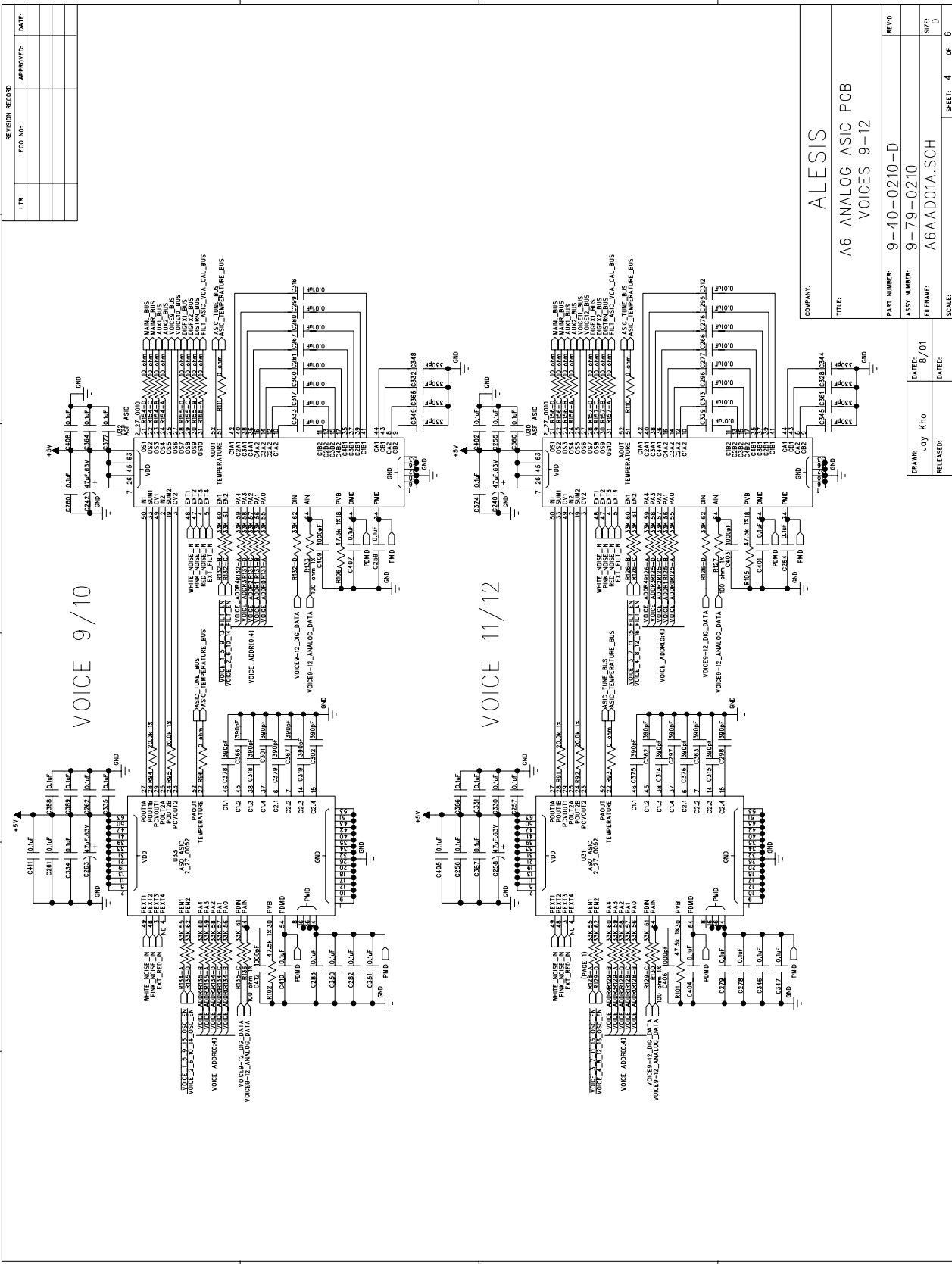
REVISION RECORD	
LTR	ECO NO:
	APPROVED:
	DATE:



COMPANY:	
TITLE:	
PART NUMBER:	
ASSEMBLY NUMBER:	
FILENAME:	
SCALE:	
DRAWN:	
DATE:	
RELEASED:	
DATE:	
SCALE:	
SHEET: 2 OF 6	



REVISION RECORD	
LTR	APPROVED: DATE:
COMPANY: ALESIS	
TITLE: A6 ANALOG ASIC PCB	
VOICES 5-8	
PART NUMBER: 9-40-0210-D	REVISION: REV0
ASSY NUMBER: 9-79-0210	DATE: 8/7/01
FILENAME: A6AADD01A.SCH	RELEASED:
SCALE:	SHEET: 3 OF 6



REVISION RECORD	
LTR	ECO NO:
APPROVED: DATE:	

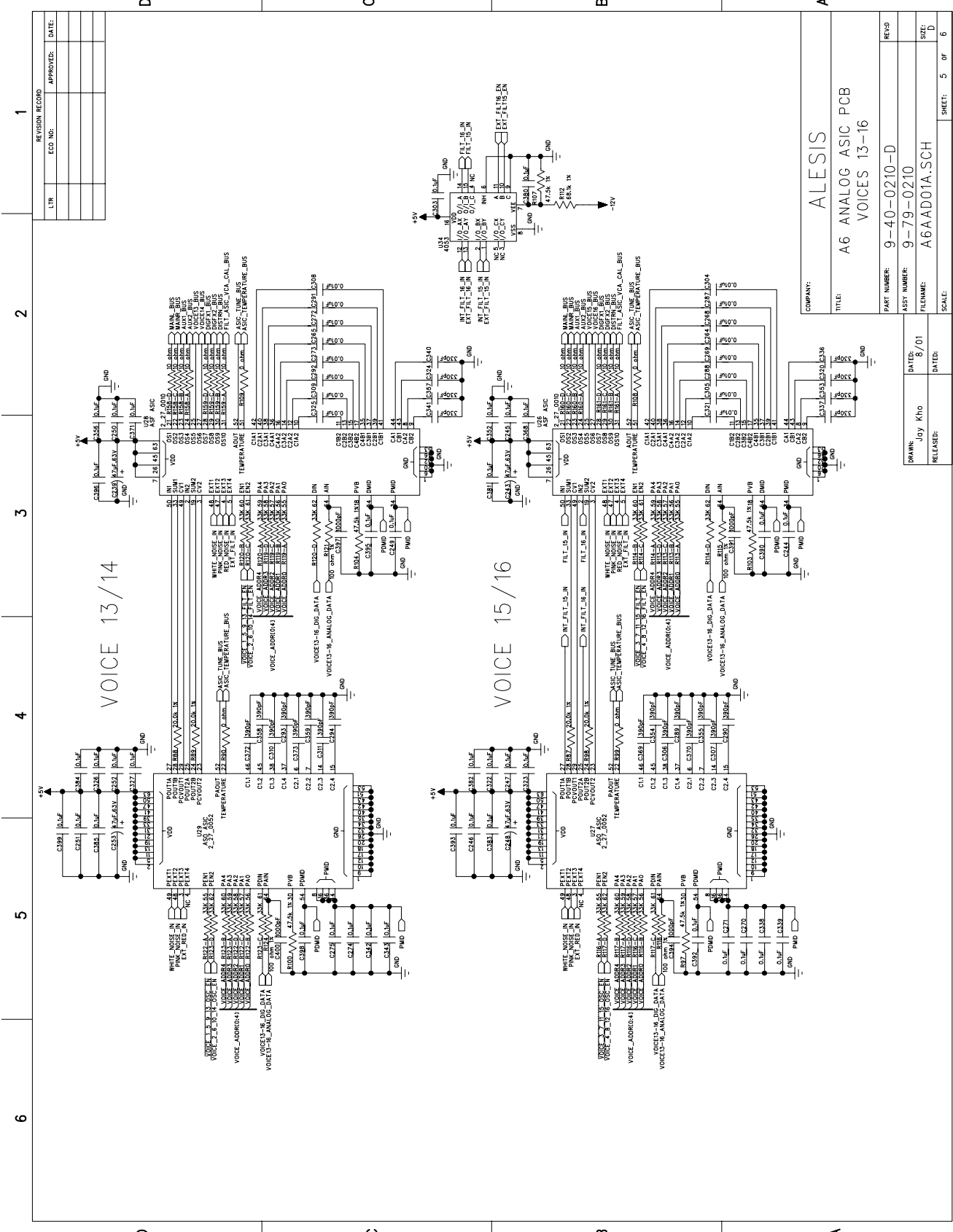
6 5 4 3 2 1

COMPANY:	
TITLE:	
PART NUMBER:	
ASST NUMBER:	
FILENAME:	
SCALE:	

ALESIS
A6 ANALOG ASIC PCB
VOICES 9-12

DATE:	REVISED:
DRAWN: J. Kito	DATE: 9/1/01
RELEASED:	DATE:

PART NUMBER:	9-40-0210-D
ASST NUMBER:	9-79-0210
FILENAME:	A6AD01A.SCH
SCALE:	SHEET: 4 OF 6



1
2
3
4
5
6

REVISION RECORD	
LTR	DATE

VOICE 13/14

VOICE 15/16

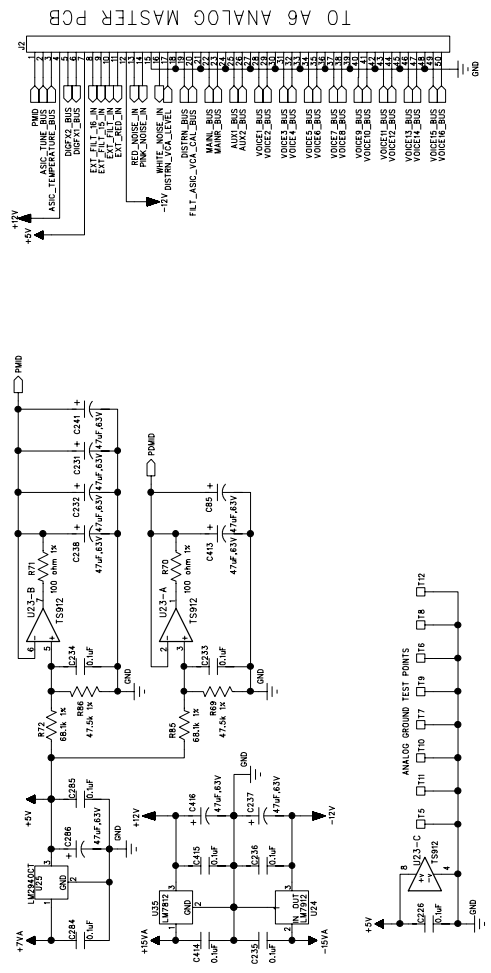
VOICE 17/18

COMPANY: ALESIS
 TITLE: A6 ANALOG ASIC PCB
 PART NUMBER: 9-40-0210-D
 ASSY NUMBER: 9-79-0210
 FILENAME: A6AAD01A.SCH
 SCALE:

DATE: 8/7/01
 DRAWN: Joy Kiro
 RELEASED:

PAGE: 5 OF 6

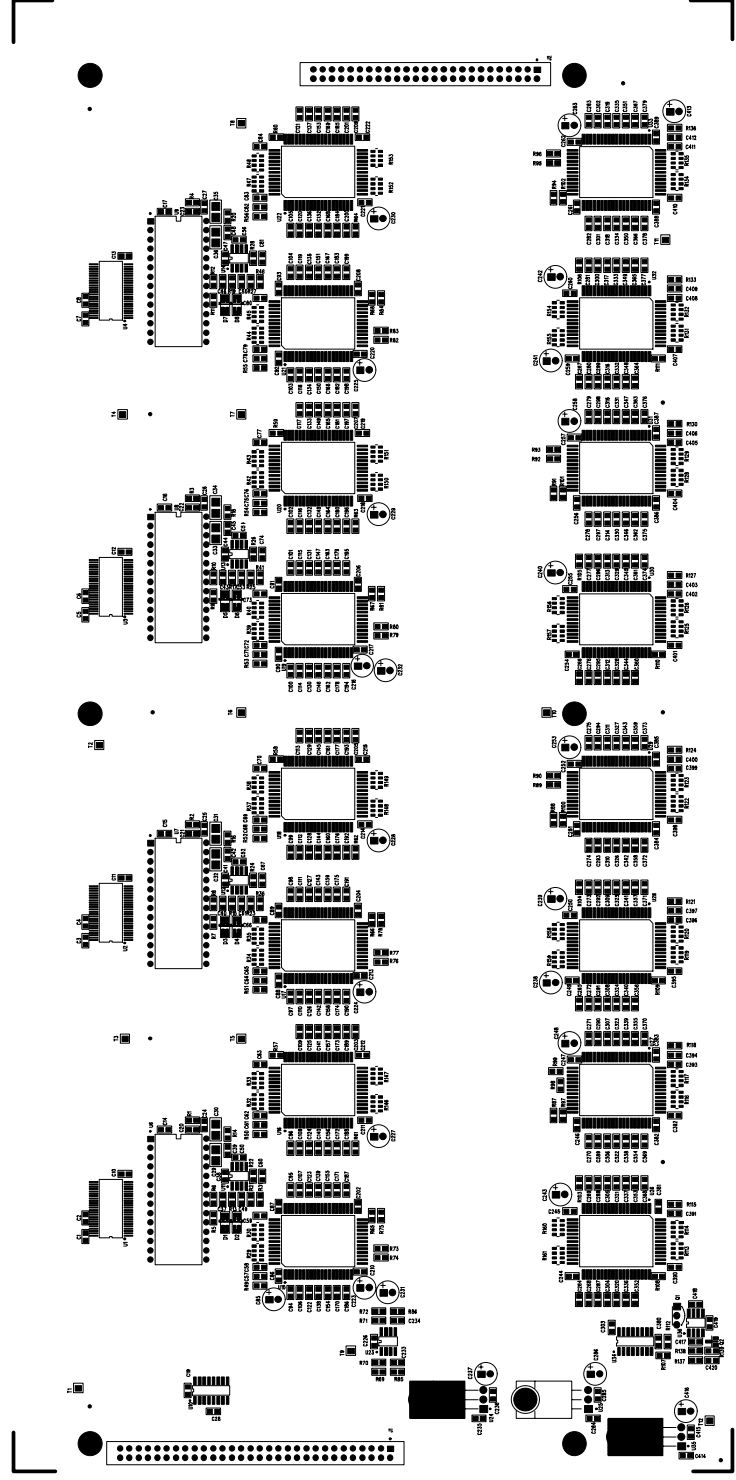
REVISION RECORD	
LTR.	DATE:



COMPANY: ALESIS
 TITLE: A6 ANALOG ASIC PCB
 MISCELLANEOUS

PART NUMBER:	9-40-0210-D	REVISED:
ASSY NUMBER:	9-79-0210	DATE:
FILENAME:	A6AAD01A.SCH	SCALE:
RELEASED:	Joy Kro	SHEET: 6 OF 6

ALESIS 9-40-0210-D "TOPASSY"



Mounting Instructions for U24, U25, and U35
(to be assembled before soldering).

